


LOC I-GNV <b>111.3</b>	APP CRS <b>286°</b>	Rwy ldg <b>7504</b> TDZE <b>122</b> Apt Elev <b>151</b>
---------------------------	------------------------	---

# ILS or LOC RWY 29

GAINESVILLE RGNL (GNV)

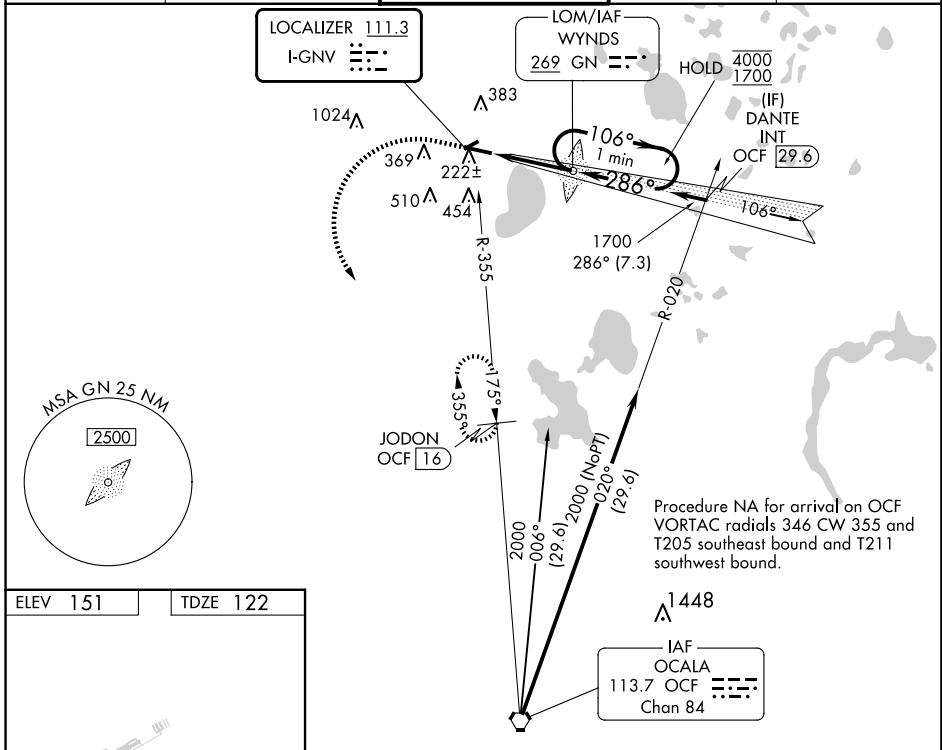
**DME required.**

⚠ When local altimeter setting not received, use Ocala altimeter setting and increase all DA 81 feet and all MDA 100 feet. Increase S-LOC 29 Cat C and D visibility to RVR 6000, Circling Cat C to 2 SM and Cat D to 2½ SM. For inop ALS when using Ocala altimeter setting, increase S-ILS 29 all Cats visibility to RVR 4500. \*\* RVR 1800 authorized with use of FD or AP or HUD to DA (NA when using Ocala altimeter setting.)

MALSR 

MISSED APPROACH: Climb to 1100 then climbing left turn to 2000 on heading 160° and OCF VORTAC R-355 to JODON/16 DME and hold.

ATIS <b>127.15</b>	JACKSONVILLE APP CON <b>118.175 338.25</b>	GAINESVILLE TOWER★ <b>119.55 (CTAF) 0 353.7</b>	GND CON <b>121.7</b>	UNICOM <b>122.95</b>
-----------------------	---	--	-------------------------	-------------------------

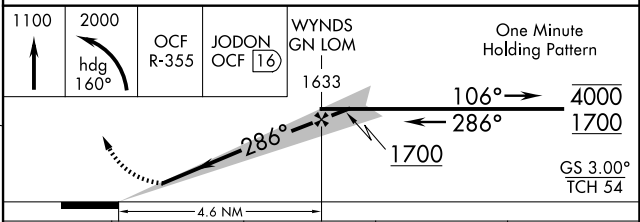


ELEV 151	TDZE 122
----------	----------

REIL Rwy 11  
MIRL Rwy 7-25  
HIRL Rwy 11-29

FAF to MAP 4.6 NM

Knots	60	90	120	150	180
Min:Sec	4:36	3:04	2:18	1:50	1:32



CATEGORY	A	B	C	D
S-ILS 29**	322/24 200 (200-½)			
S-LOC 29	580/24	458 (500-½)	580/45	458 (500-¾)
<input checked="" type="checkbox"/> CIRCLING	620-1 469 (500-1)	700-1 549 (600-1)	760-1¾ 609 (700-1¾)	820-2 669 (700-2)

SE-3, 20 MAR 2025 to 17 APR 2025

SE-3, 20 MAR 2025 to 17 APR 2025