

APP CRS	Rwy Idg	8457
070°	TDZE	25
	Apt Elev	25

RNAV (GPS) V RWY 8

JUNEAU INTL (JNU)(PAJN)

RNP APCH - GPS.

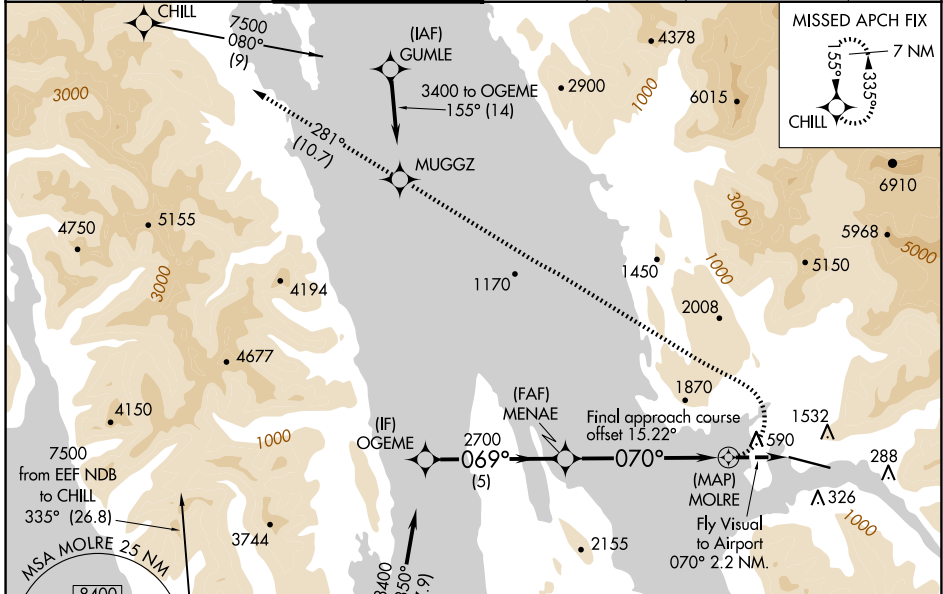
⚠ Circling NA at night. Rwy 8 helicopter visibility reduction below 1 SM NA. When Juneau altimeter setting not received, procedure NA.

⊖ 0°C When VGSI inop, procedure NA at night. Lead-in lights not aligned with final approach course. For inop Lead-in lights, increase visibility to 4 SM. Circling NA north of Rwy 8-26.

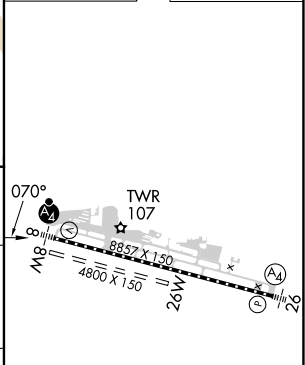
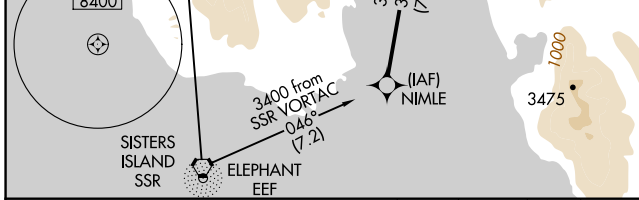
MALSF

⚠ MISSED APPROACH: Climbing left turn to 9000 direct MUGGZ and on 281° track to CHILL and hold, continue climb-in-hold to 9000. *Missed approach requires minimum climb of 363 feet per NM to 3200.

ATIS	ANCHORAGE CENTER	JUNEAU TOWER*	GND CON	CLNC DEL	JUNEAU RADIO	UNICOM
135.2	133.9	118.7 (CTAF) 278.3	121.9	121.9	122.2	122.95



ELEV 25	D TDZE 25
---------	------------------



OGEME	MENAE	MUGGZ	CHILL
3400	2700	9000	281°
VGSI and descent angles not coincident (VGSI Angle 3.50/TCH 38).			

CATEGORY	A	B	C	D
LNAV MDA*	1880-2	1855 (1900-2)		NA
LNAV MDA	2340-3	2315 (2400-3)		NA
C CIRCLING	2340-3	2315 (2400-3)		NA

RLS Rwy 8

REIL Rwy 8

REIL Rwy 26

HIRL Rwy 8-26

AK, 20 FEB 2025 to 17 APR 2025

AK, 20 FEB 2025 to 17 APR 2025