

LOC/DME	I-ANI	Rwy Idg	5400
109.7		TDZE	97
Chan 34		Apt Elev	97

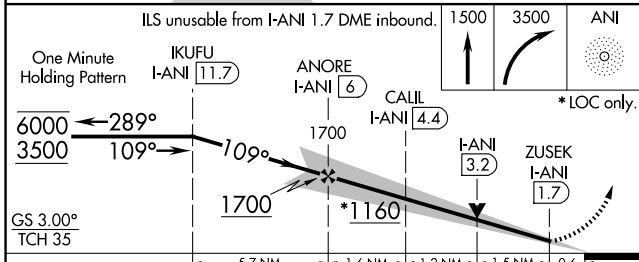
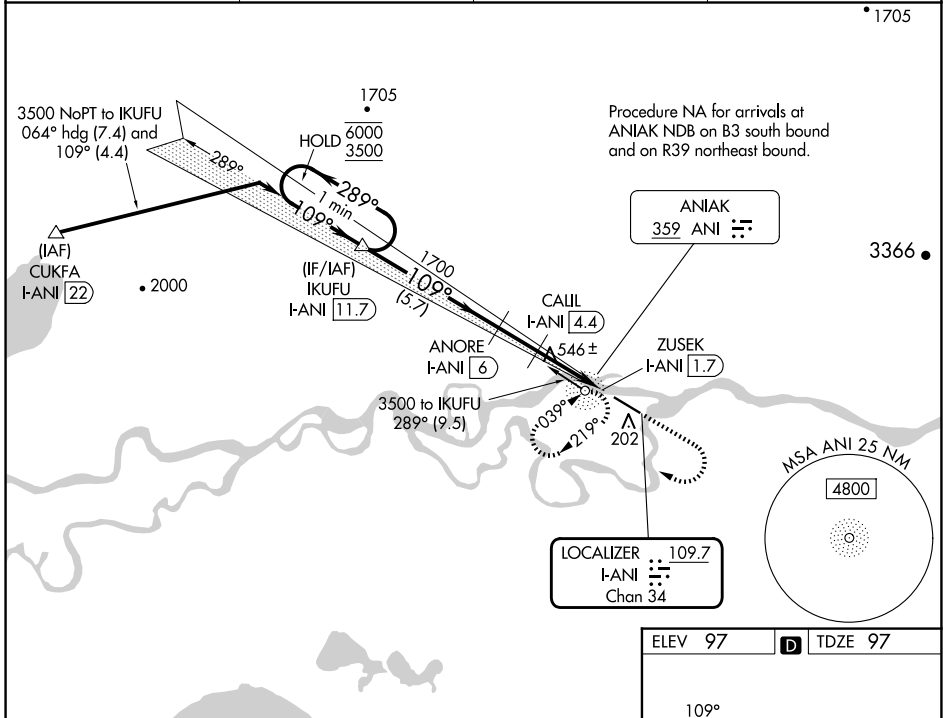
APP CRS
109°

ILS or LOC RWY 11

ANIAK (ANI)(PANI)

DME required.	MALSF	MISSED APPROACH: Climb to 1500 then climbing right turn to 3500 direct ANI NDB and hold, continue climb-in-hold to 3500. (ADF required)
<p>⚠ Circling NA north of Rwy 11-29. Rwy 11 helicopter visibility reduction below 3/4 SM NA. Inop table does not apply to S-ILS all Cats.</p> <p>❄ -37°C</p>		

AWOS-3P 124.3	ANCHORAGE CENTER 118.15 251.05	CLNC DEL 118.15	CTAF 122.10
-------------------------	--	---------------------------	-----------------------



ELEV 97	TDZE 97
<p>109°</p> <p>6200 X 100</p> <p>138*</p>	
<p>HIRL Rwy 11-29</p>	

CATEGORY	A	B	C	D
S-ILS 11	347-3/4 250 (300-3/4)			
S-LOC 11	800-3/4	703 (800-3/4)	800-1 3/4	703 (800-1 3/4)
C CIRCLING	800-1	703 (800-1)	860-2 1/4	1200-3
			763 (800-2 1/4)	1103 (1200-3)

AK, 20 FEB 2025 to 17 APR 2025

AK, 20 FEB 2025 to 17 APR 2025