

(PUYVO5.PUYVO) 23222

PUYVO FIVE DEPARTURE (RNAV)

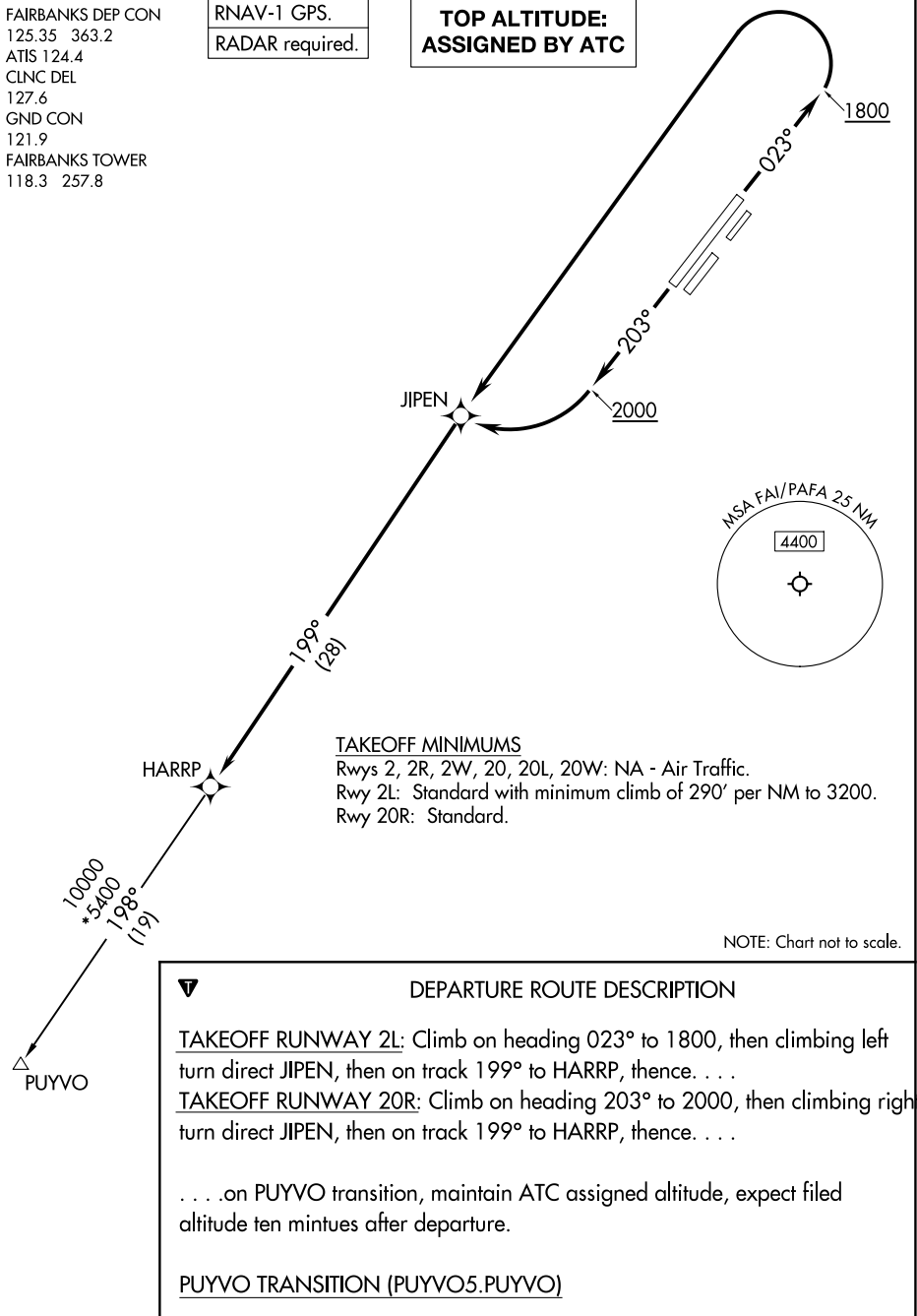
AL-1234 (FAA)

FAIRBANKS INTL (FAI) (PAFA)
FAIRBANKS, ALASKA

FAIRBANKS DEP CON
125.35 363.2
ATIS 124.4
CLNC DEL
127.6
GND CON
121.9
FAIRBANKS TOWER
118.3 257.8

RNAV-1 GPS.
RADAR required.

**TOP ALTITUDE:
ASSIGNED BY ATC**



TAKEOFF MINIMUMS
Rwys 2, 2R, 2W, 20, 20L, 20W: NA - Air Traffic.
Rwy 2L: Standard with minimum climb of 290' per NM to 3200.
Rwy 20R: Standard.

NOTE: Chart not to scale.

DEPARTURE ROUTE DESCRIPTION

TAKEOFF RUNWAY 2L: Climb on heading 023° to 1800, then climbing left turn direct JIPEN, then on track 199° to HARRP, thence. . . .

TAKEOFF RUNWAY 20R: Climb on heading 203° to 2000, then climbing right turn direct JIPEN, then on track 199° to HARRP, thence. . . .

. . . .on PUYVO transition, maintain ATC assigned altitude, expect filed altitude ten minutes after departure.

PUYVO TRANSITION (PUYVO5.PUYVO)

PUYVO FIVE DEPARTURE (RNAV)
(PUYVO5.PUYVO) 10AUG23

FAIRBANKS, ALASKA
FAIRBANKS INTL (FAI) (PAFA)

AK, 20 FEB 2025 to 17 APR 2025

AK, 20 FEB 2025 to 17 APR 2025