

WAAS CH <b>53612</b> <b>W02A</b>	APP CRS <b>023°</b>	Rwy Idg <b>4510</b> TDZE <b>433</b> Apt Elev <b>439</b>
--	------------------------	---

# RNAV (GPS) RWY 2R

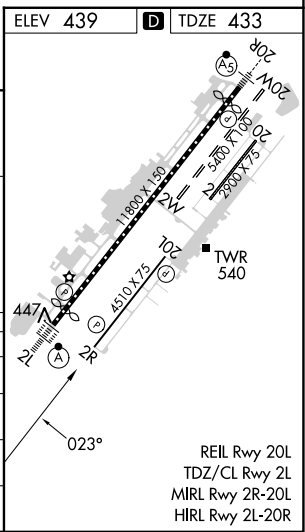
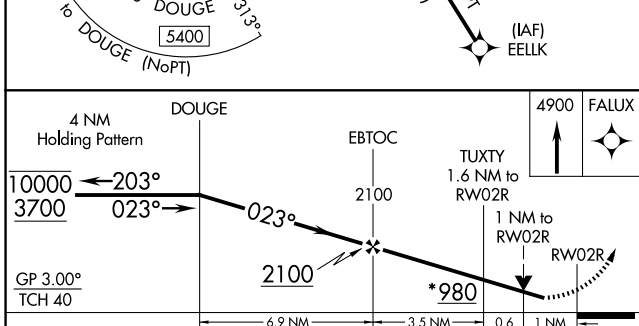
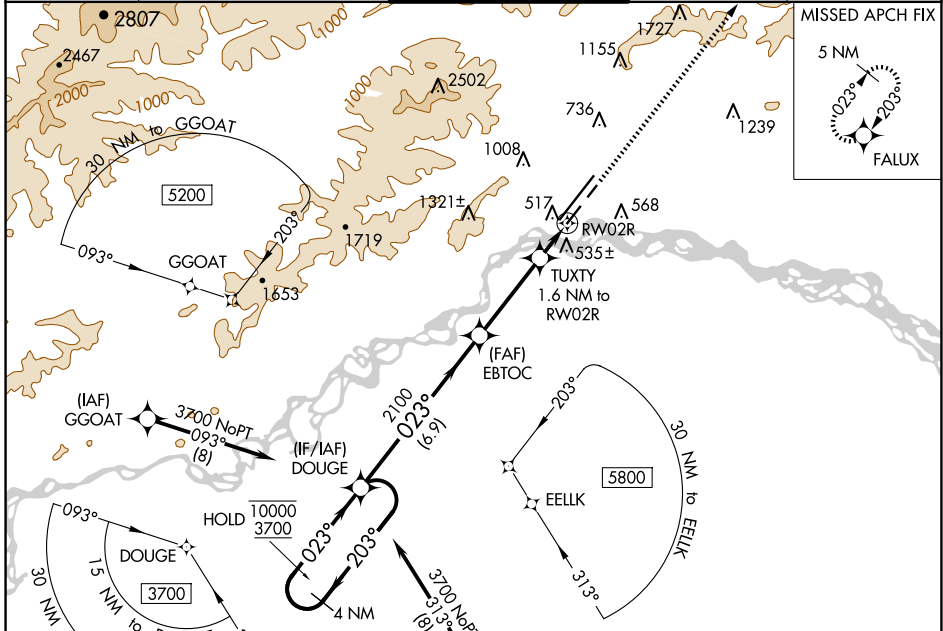
FAIRBANKS INTL (FAI) (PAFA)

RNP APCH - GPS.

**⚠** Circling NA west of Rwy 2L-20R. Circling NA to Rws 2W and 20W.  
**⚠** -29°C Rwy 2R helicopter visibility reduction below ¾ SM NA. For uncompensated Baro-VNAV systems, LNAV/VNAV NA below -21°C or above 54°C.

MISSED APPROACH: Climb to 4900 direct FALUX and hold, continue climb-in-hold to 4900.

ATIS <b>124.4</b>	FAIRBANKS APP CON <b>125.35 363.2</b>	FAIRBANKS TOWER <b>118.3 257.8</b>	GND CON <b>121.9</b>	CLNC DEL <b>127.6</b>
----------------------	--	---------------------------------------	-------------------------	--------------------------



CATEGORY	A	B	C	D
LPV DA		683-7/8	250 (300-7/8)	
LNAV/ VNAV DA		731-1	298 (300-1)	
LNAV MDA		800-1	367 (400-1)	
<b>C</b> CIRCLING	880-1 441 (500-1)	900-1 461 (500-1)	900-1½ 461 (500-1½)	1020-2 581 (600-2)

AK, 20 FEB 2025 to 17 APR 2025

AK, 20 FEB 2025 to 17 APR 2025