

24305

AIRPORT DIAGRAM

AL-1235 (FAA)

KENAI MUNI (ENA)(PAEN)
KENAI, ALASKA

ATIS
133.35
KENAI TOWER ★
121.3 239.3
GND CON
118.75

D

VAR 132° E
JANUARY 2020
ANNUAL RATE OF CHANGE
0.2° W

FLOAT PLANE
WATER TAXIWAY
TRANSIENT
AIRCRAFT PARKING

TRANSIENT
AIRCRAFT PARKING

FLOAT PLANE
WATER TAXIWAY

TRANSIENT
AIRCRAFT PARKING

TRANSIENT
AIRCRAFT PARKING

TRANSIENT
AIRCRAFT PARKING

TRANSIENT
AIRCRAFT PARKING

TRANSIENT
AIRCRAFT PARKING

TRANSIENT
AIRCRAFT PARKING

TRANSIENT
AIRCRAFT PARKING

TRANSIENT
AIRCRAFT PARKING

TRANSIENT
AIRCRAFT PARKING

TRANSIENT
AIRCRAFT PARKING

TRANSIENT
AIRCRAFT PARKING

TRANSIENT
AIRCRAFT PARKING

TRANSIENT
AIRCRAFT PARKING

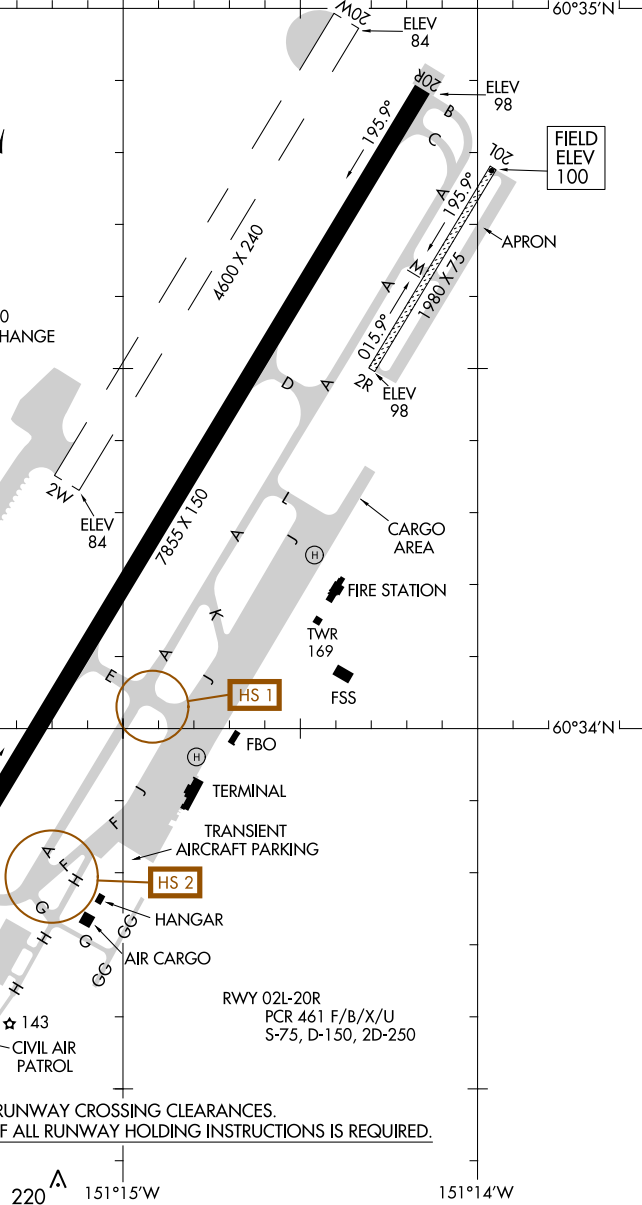
TRANSIENT
AIRCRAFT PARKING

TRANSIENT
AIRCRAFT PARKING

TRANSIENT
AIRCRAFT PARKING

TRANSIENT
AIRCRAFT PARKING

TRANSIENT
AIRCRAFT PARKING



CAUTION: BE ALERT TO RUNWAY CROSSING CLEARANCES.
READBACK OF ALL RUNWAY HOLDING INSTRUCTIONS IS REQUIRED.

151°16'W 220 151°15'W 151°14'W

AK, 20 FEB 2025 to 17 APR 2025

AK, 20 FEB 2025 to 17 APR 2025

AIRPORT DIAGRAM

24305

KENAI, ALASKA
KENAI MUNI (ENA)(PAEN)