

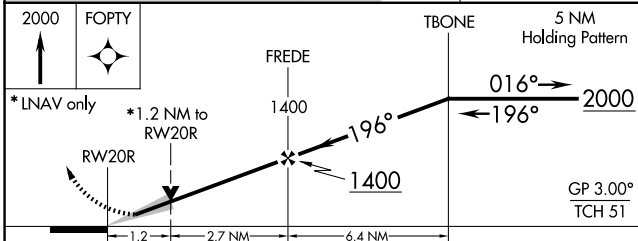
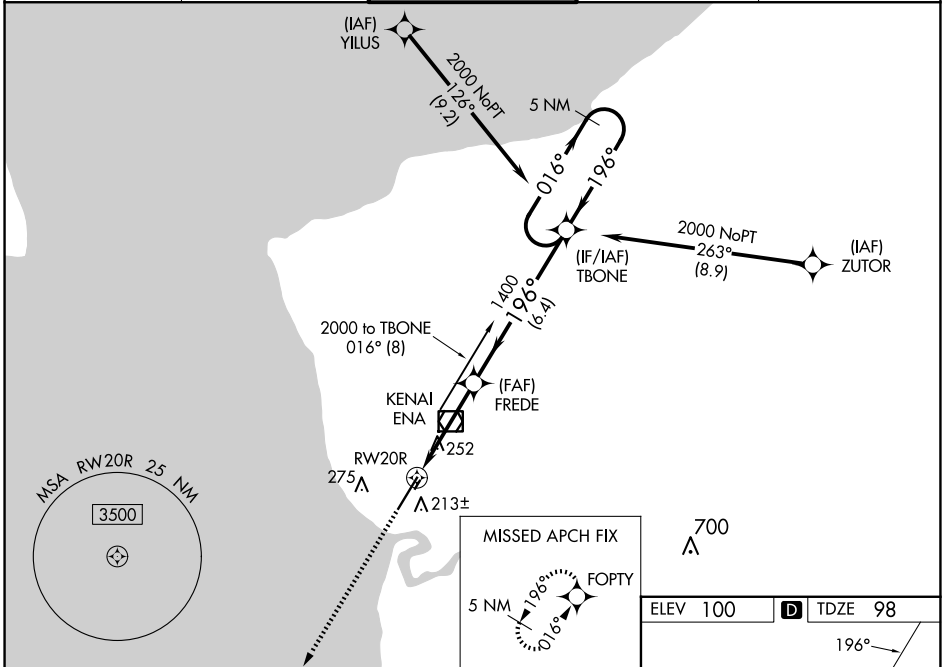
WAAS CH <b>99504</b> <b>W20A</b>	APP CRS <b>196°</b>	Rwy Idg <b>7575</b> TDZE <b>98</b> Apt Elev <b>100</b>
--	------------------------	--

# RNAV (GPS) RWY 20R

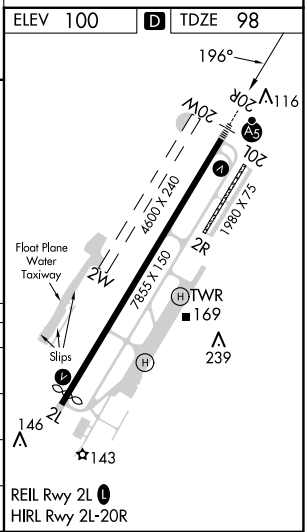
KENAI MUNI (ENA) (PAEN)

RNP APCH.	<p><b>⚠</b> For uncompensated Baro-VNAV systems, LNAV/VNAV NA below -18°C (0°F) or above 54°C (130°F). Baro-VNAV and VDP NA when using Soldotna altimeter setting. Circling Rwy 2R, 20L NA at night. When local altimeter setting not received, use Soldotna altimeter setting and increase all DA 22 feet and all MDA 40 feet, increase LNAV visibility Cat C and D to RVR 5000. Circling Rwy 2W, 20W NA. # RVR 1800 authorized with use of FD or AP or HUD to DA. (NA when using Soldotna altimeter setting).</p>	MALSR 	MISSED APPROACH: Climb to 2000 direct FOPTY and hold.
-----------	---	-----------	--

ATIS <b>133.35</b>	ANCHORAGE CENTER <b>125.7 379.1</b>	KENAI TOWER* <b>121.3 (CTAF) 239.3</b>	GND CON <b>118.75</b>	KENAI RADIO <b>122.65</b>
-----------------------	--	---	--------------------------	------------------------------



CATEGORY	A	B	C	D
LPV DA#		298/24	200 (200-½)	
LNAV/VNAV DA		348/24	250 (300-½)	
LNAV MDA	520/24	422 (500-½)	520/40	422 (500-¾)
CIRCLING	560-1 460 (500-1)	580-1 480 (500-1)	580-1½ 480 (500-½)	680-2 580 (600-2)



AK, 20 FEB 2025 to 17 APR 2025

AK, 20 FEB 2025 to 17 APR 2025