

WAAS CH <b>69404</b> <b>W02A</b>	APP CRS <b>016°</b>	Rwy Idg TDZE <b>94</b> Apt Elev <b>100</b>	<b>7575</b>
--	------------------------	--	-------------

# RNAV (GPS) RWY 2L

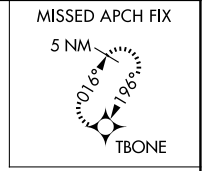
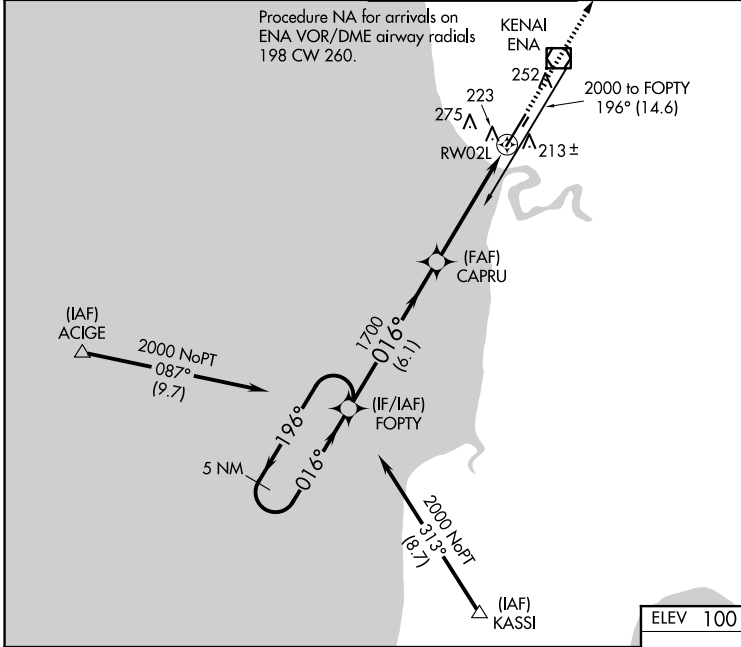
KENAI MUNI (ENA) (PAEN)

RNP APCH.

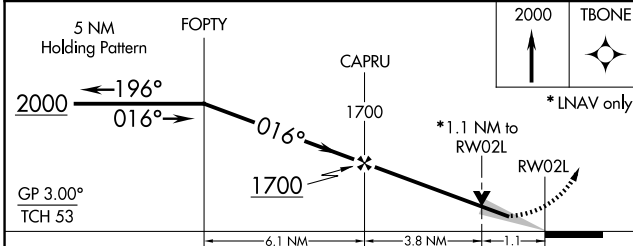
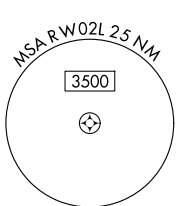
**⚠** Baro-VNAV NA when using Soldotna altimeter setting. For uncompensated Baro-VNAV systems, LNAV/VNAV NA below -18°C (0°F) or above 54°C (130°F). When local altimeter setting not received, use Soldotna altimeter setting: increase LPV DA to 366 feet and LNAV/VNAV DA to 429 feet and all MDA 40 feet; increase LPV and LNAV/VNAV visibility all Cats and LNAV Cat C/D visibility 1/8 mile; increase Circling Cat D visibility 1/4 mile. VDP NA when using Soldotna altimeter setting. Circling Rwy 2R, 20L NA at night. Circling Rwy 2W, 20W NA.

**MISSED APPROACH:**  
Climb to 2000 direct  
TBONE and hold.

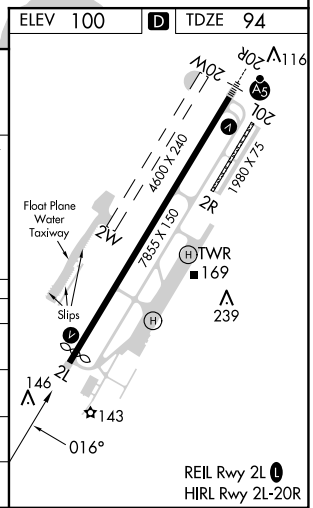
ATIS <b>133.35</b>	ANCHORAGE CENTER <b>125.7 379.1</b>	KENAI TOWER* <b>121.3 (CTAF) 239.3</b>	GND CON <b>118.75</b>	KENAI RADIO <b>122.65</b>
-----------------------	--	---	--------------------------	------------------------------



700<sup>A</sup>



CATEGORY	A	B	C	D
LPV DA	344-3/4 250 (300-3/4)			
LNAV/VNAV DA	407-1 313 (400-1)			
LNAV MDA	480-1 386 (400-1)		480-1 1/8 386 (400-1 1/8)	
<b>C</b> CIRCLING	560-1 460 (500-1)	580-1 480 (500-1)	580-1 1/2 480 (500-1 1/2)	740-2 640 (700-2)



AK, 20 FEB 2025 to 17 APR 2025

AK, 20 FEB 2025 to 17 APR 2025