

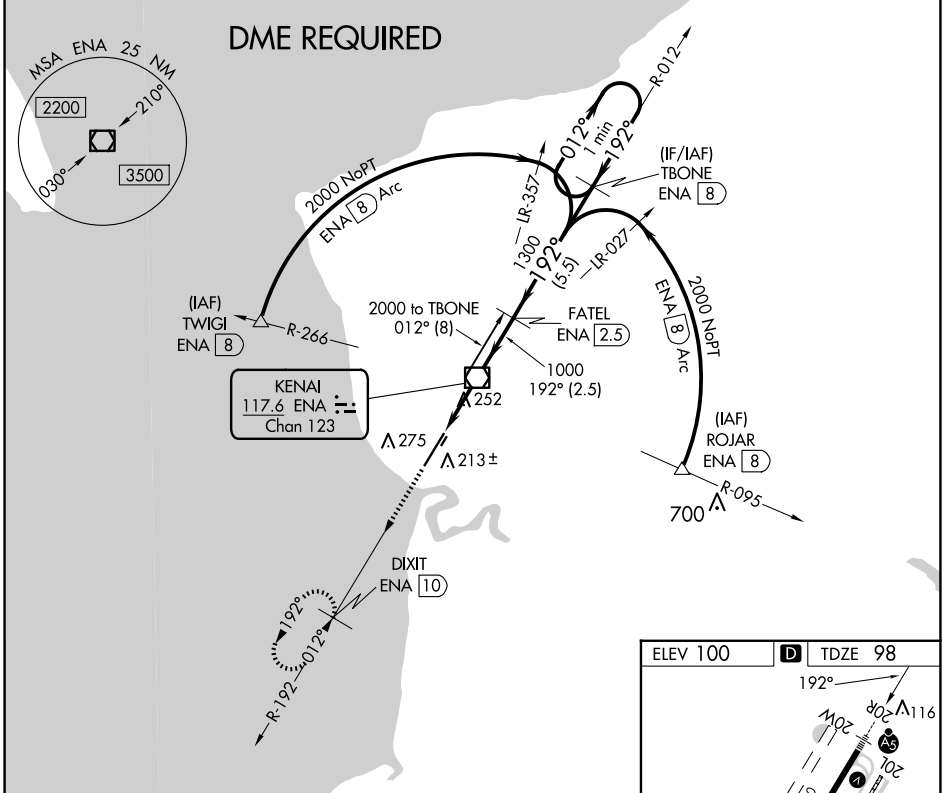
VOR/DME ENA <b>117.6</b> Chan <b>123</b>	APP CRS <b>192°</b>	Rwy Idg <b>7575</b> TDZE <b>98</b> Apt Elev <b>100</b>
--	------------------------	--

# VOR RWY 20R

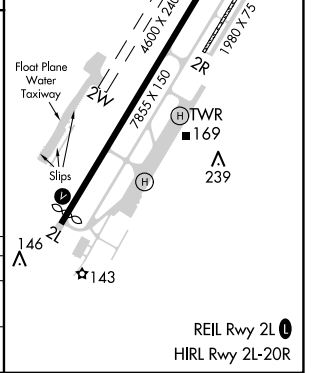
KENAI MUNI (ENA) (PAEN)

<p>Circling Rwy 2R, 20L NA at night. DME required. VDP NA when using Soldotna altimeter setting. When local altimeter setting not received, use Soldotna altimeter setting and increase all MDA 40 feet, increase S-20R Cats C and D visibility to RVR 5000. Circling Rwy 2W, 20W NA.</p>	<p>MALS R</p>	<p>MISSED APPROACH: Climb to 2200 on ENA VOR/DME R-192 to DIXIT/ENA VOR/DME 10 DME and hold.</p>	
		<p>ATIS <b>133.35</b></p>	<p>ANCHORAGE CENTER <b>125.7 379.1</b></p>
		<p>KENAI RADIO <b>122.65</b></p>	

ATIS <b>133.35</b>	ANCHORAGE CENTER <b>125.7 379.1</b>	KENAI TOWER* <b>121.3 (CTAF) 239.3</b>	GND CON <b>118.75</b>	KENAI RADIO <b>122.65</b>
-----------------------	--	---	--------------------------	------------------------------



2200 ENA R-192	DIXIT ENA (10)	VGSI and descent angles not coincident (VGSI Angle 3.00/TCH 51).		TBONE ENA (8)	One Minute Holding Pattern
ENA (2.3)	ENA (1.2)	ENA VOR/DME	FATEL ENA (2.5)		
	3.44° TCH 51				
	1.2	1.2	2.5 NM	5.5 NM	
CATEGORY	A	B	C	D	
S-20R	520/24	422 (500-½)	520/40	422 (500-¾)	
CIRCLING	560-1 460 (500-1)	580-1 480 (500-1)	580-1½ 480 (500-½)	680-2 580 (600-2)	



AK, 20 FEB 2025 to 17 APR 2025

AK, 20 FEB 2025 to 17 APR 2025