

VOR/DME ENA <b>117.6</b> Chan <b>123</b>	APP CRS <b>012°</b>	Rwy Idg TDZE <b>94</b> Apt Elev <b>100</b>	<b>7575</b>
--	------------------------	--	-------------

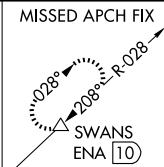
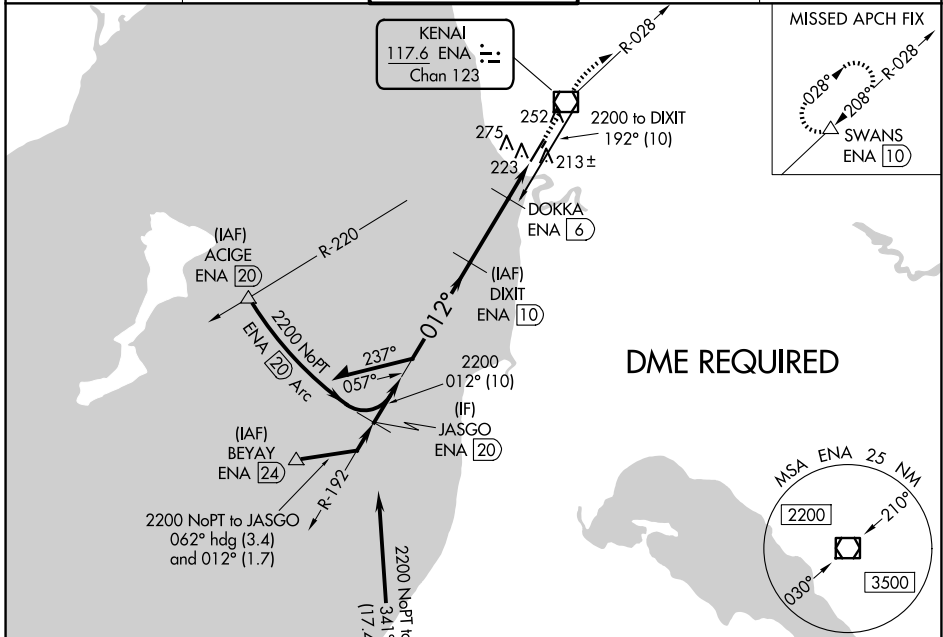
# VOR RWY 2L

KENAI MUNI (ENA) (PAEN)

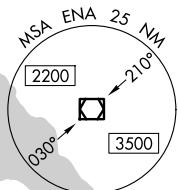
**⚠** Circling Rwy 2R, 20L NA at night. DME required. When local altimeter setting not received, use Soldotna altimeter setting and increase all MDA 40 feet; increase S-2L Cat C and D visibility 1/8 mile and Circling Cat D visibility 1/4 mile. VDP NA with Soldotna altimeter setting. Circling Rwy 2W, 20W NA.

MISSED APPROACH: Climb to 2000 direct ENA VOR/DME and on ENA VOR/DME R-028 to SWANS/ENA 10 DME and hold.

ATIS <b>133.35</b>	ANCHORAGE CENTER <b>125.7 379.1</b>	KENAI TOWER* <b>121.3 (CTAF) 239.3</b>	GND CON <b>118.75</b>	KENAI RADIO <b>122.65</b>
-----------------------	--	---	--------------------------	------------------------------

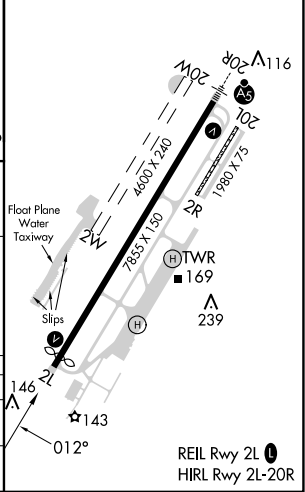
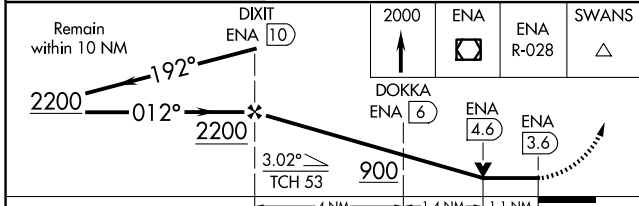
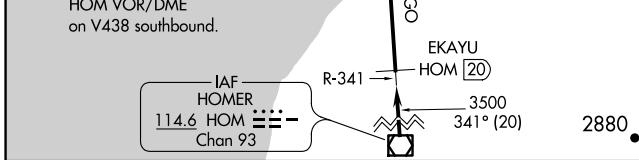


**DME REQUIRED**



Procedure NA for arrivals at HOM VOR/DME on V438 southbound.

ELEV 100	<b>D</b> TDZE 94
----------	------------------



CATEGORY	A	B	C	D
S-2L	480-1	386 (400-1)	480-1 1/8	386 (400-1 1/8)
<b>C</b> CIRCLING	560-1 460 (500-1)	580-1 480 (500-1)	580-1 1/2 480 (500-1 1/2)	680-2 580 (600-2)

AK, 20 FEB 2025 to 17 APR 2025

AK, 20 FEB 2025 to 17 APR 2025