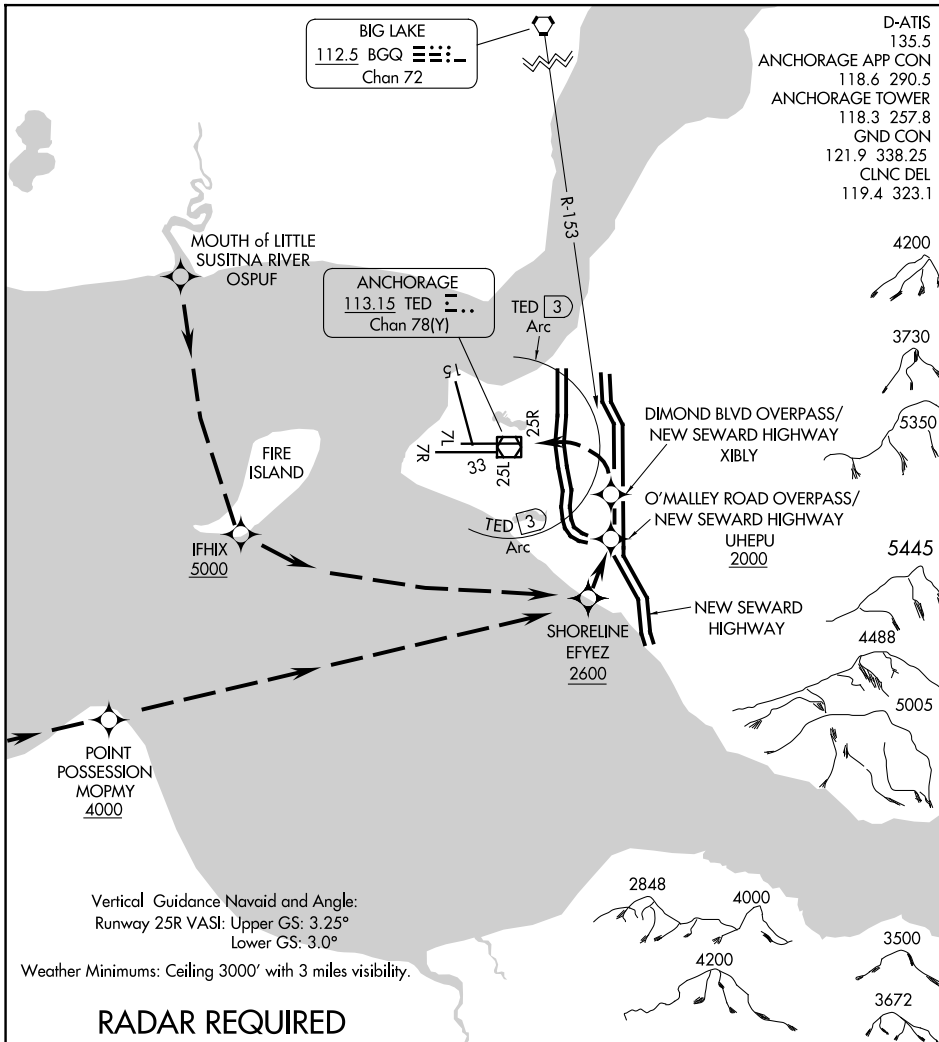


HIGHWAY VISUAL RWY 25R

TED STEVENS ANCHORAGE INTL (ANC) (PANC)
AL-1500 (FAA) ANCHORAGE, ALASKA



AK, 20 FEB 2025 to 17 APR 2025

AK, 20 FEB 2025 to 17 APR 2025

RADAR REQUIRED

NM	1	2	3	4	5	6	7	8	9	10	11	12	13	14	15	16	17	18	19	20	21	22	23	24	25	26
----	---	---	---	---	---	---	---	---	---	----	----	----	----	----	----	----	----	----	----	----	----	----	----	----	----	----

HIGHWAY VISUAL RWY 25R
PROCEDURE NOT AUTHORIZED AT NIGHT

HIGHWAY VISUAL RWY 25R

Amdt 1 09FEB12

61°10'N-150°00'W ANCHORAGE, ALASKA

TED STEVENS ANCHORAGE INTL (ANC) (PANC)