

LOC/DME I-ANC 111.3 Chan 50	APP CRS 074°	Rwy ldg 12400 TDZE 132 Apt Elev 151
-------------------------------------------------	------------------------	----------------------------------------------------------------

ILS RWY 7R (SA CAT I)

TED STEVENS ANCHORAGE INTL (ANC) (PANC)

DME required.

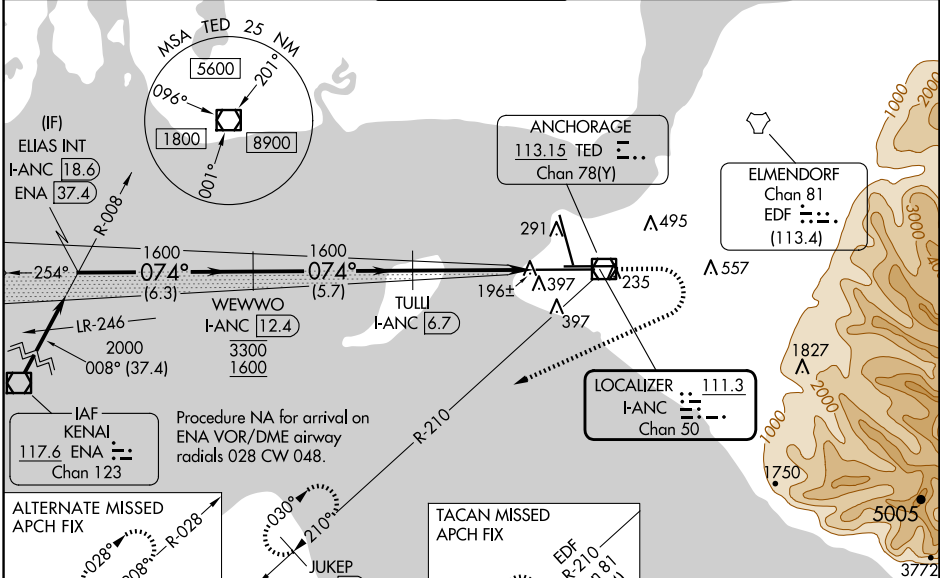
⚠ -21°C Requires specific OPSPEC, MSPEC, or LOA approval. Rwy 7L threshold 6140 feet east of Rwy 7R threshold.

ALSIF-2



MISSED APPROACH: Climb to 780 then climbing right turn to 3000 on heading 230° and on TED VOR/DME R-210 to JUKEP/TED 15 DME and hold. (TACAN aircraft climb to 780 then climbing right turn to 3000 on heading 230° and EDF TACAN R-210 to JUKEP/EDF 22.6 DME and hold).

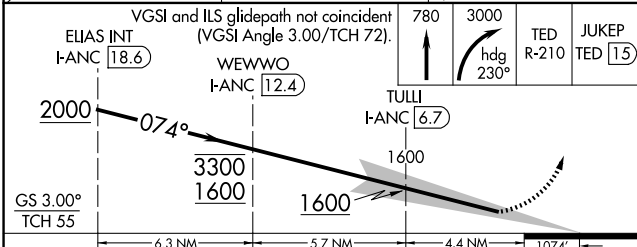
D-ATIS 135.5	ANCHORAGE APP CON 118.6 290.5	ANCHORAGE TOWER 118.3 257.8	GND CON 121.9 338.25	CINC DEL 119.4 323.1
------------------------	-----------------------------------------	---------------------------------------	--------------------------------	--------------------------------



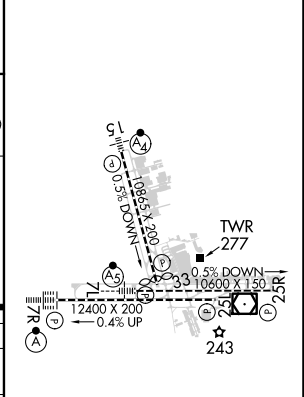
Procedure NA for arrival on ENA VOR/DME airway radials 028 CW 048.

ALTERNATE MISSED APCH FIX: JUKEP ENA (34.2) via R-028.

TACAN MISSED APCH FIX: JUKEP EDF (22.6) via R-210.



ELEV 151	D TDZE 132
----------	-------------------



CATEGORY	A	B	C	D
S-ILS 7R	RA 245/14 150 DA 282			

SA CATEGORY I ILS - SPECIAL AIRCREW & AIRCRAFT CERTIFICATION REQUIRED

REIL Rwy 33
TDZ/CL Rwy 7L and 7R
HIRL all Rwy

AK, 20 FEB 2025 to 17 APR 2025

AK, 20 FEB 2025 to 17 APR 2025