

APP CRS	Rwy Idg	<b>10400</b>
<b>329°</b>	TDZE	<b>121</b>
	Apt Elev	<b>151</b>

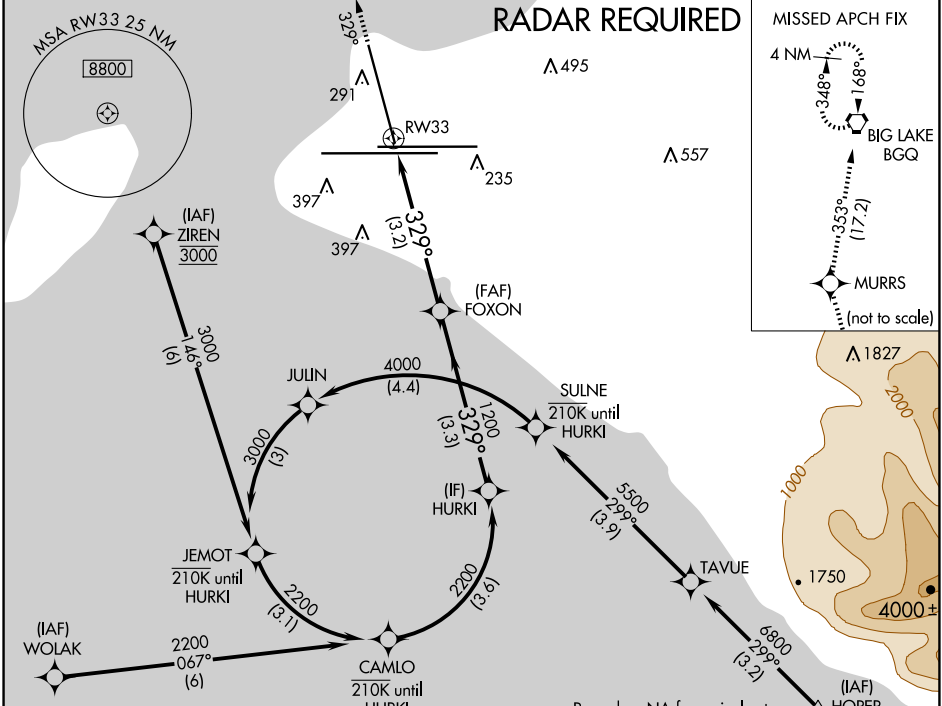
# RNAV (RNP) RWY 33

TED STEVENS ANCHORAGE INTL (ANC) (PANC)

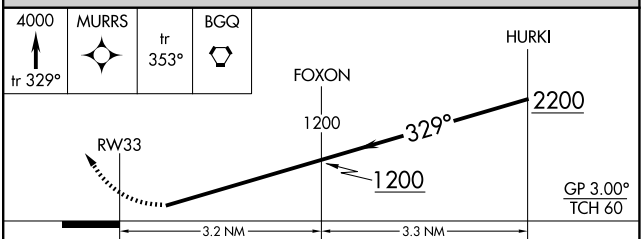
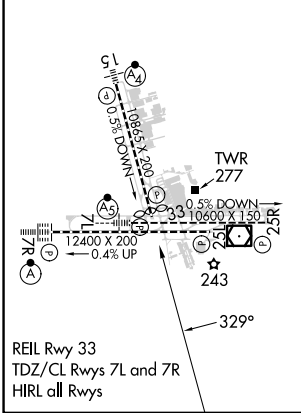
RNP AR APCH. RF required.  
 For uncompensated Baro-VNAV systems,  
 procedure NA below -17°C or above 54°C.

MISSED APPROACH: Climb to 4000 on the RNAV missed approach route to BGQ VORTAC and hold.

D-ATIS <b>135.5</b>	ANCHORAGE APP CON <b>118.6 290.5</b>	ANCHORAGE TOWER <b>118.3 257.8</b>	GND CON <b>121.9 338.25</b>	CLNC DEL <b>119.4 323.1</b>
------------------------	---	---------------------------------------	--------------------------------	--------------------------------



ELEV 151	<b>D</b>	TDZE 121
----------	----------	----------



CATEGORY	A	B	C	D
RNP 0.11 DA		463-1	342 (400-1)	
RNP 0.20 DA		525-1 1/8	404 (400-1 1/8)	
RNP 0.30 DA		687-1 5/8	566 (600-1 5/8)	

## AUTHORIZATION REQUIRED

AK, 20 FEB 2025 to 17 APR 2025

AK, 20 FEB 2025 to 17 APR 2025