

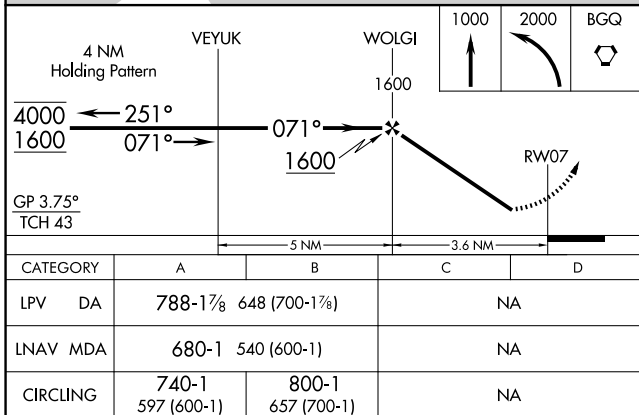
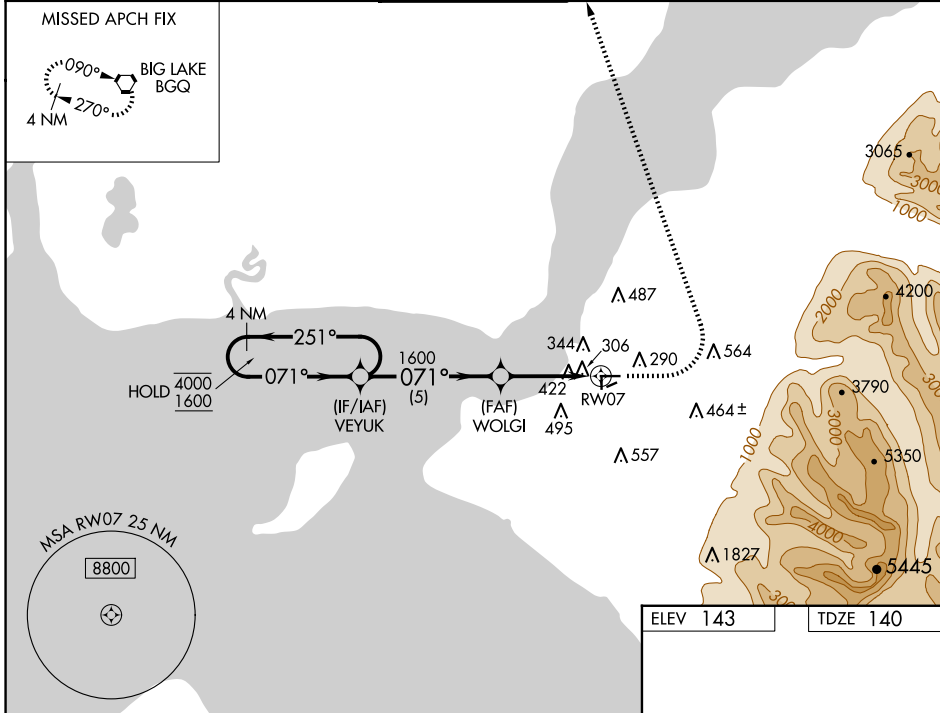
WAAS CH 67473 W07B	APP CRS 071°	Rwy ldg 4000 TDZE 140 Apr Elev 143
--	------------------------	---

RNAV (GPS) Y RWY 7

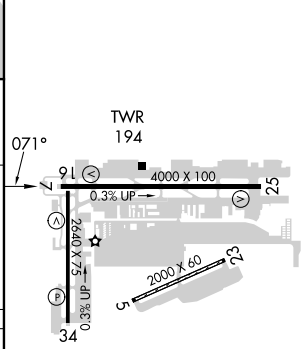
MERRILL FLD (MRI) (PAMR)

RNP APCH - GPS.		RADAR required for procedure entry.		MISSED APPROACH: Climb to 1000 then climbing left turn to 2000 direct BGQ VORTAC and hold.	
<p>▼ When local altimeter setting not received, use Ted Stevens Anchorage Intl altimeter setting and increase LPV DA to 801 feet. Increase all MDAs 20 feet. Helicopter visibility reduction below 1 SM NA. Circling Rwy 16, 34, 5 and 23 NA at night.</p>					

ATIS 124.25	ANCHORAGE APP CON 119.1 363.2	MERRILL TOWER * 126.0 (CTAF) 0	GND CON 121.7	UNICOM 122.95
-----------------------	---	--	-------------------------	-------------------------



ELEV 143	TDZE 140
----------	----------



REIL Rws 7, 16, 25, and 34	MIRL Rws 7-25 and 16-34
----------------------------	-------------------------

AK, 20 FEB 2025 to 17 APR 2025

AK, 20 FEB 2025 to 17 APR 2025