

# HI-ILS Y or LOC/DME Y RWY 06L

LOC I-AND <b>109.3</b>	APCH CRS <b>064°</b>	Rwy Idg <b>10,528</b> TDZE <b>539</b> Arprt Elev <b>617</b>
---------------------------	-------------------------	--

AL-2147 [USAF]

ANDERSEN AFB (PGUA)

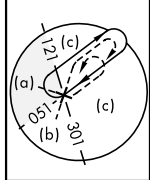
ATC RADAR monitoring required.

▼ \* When ALS Inop, increase CAT AB RVR to 55, vis to 1 mile; CAT CDE vis to 1 3/8 miles.  
\*\* Circling not authorized NW of Rwy 06L-24R.



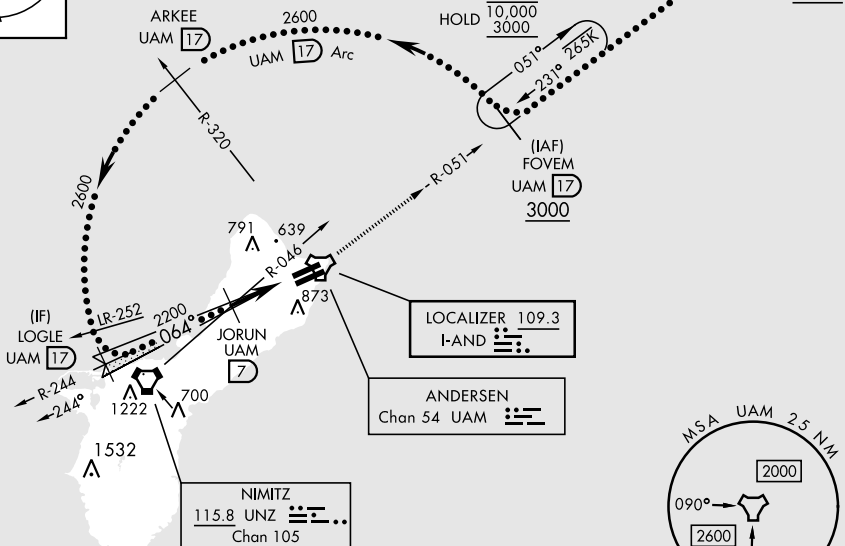
MISSED APPROACH: Climb to 3000, intercept UAM R-051 to FOVEM and hold.

ATIS <b>118.175 254.325</b>	GUAM APP CON <b>119.8 269.0</b>	TOWER <b>126.2 233.7</b>	GND CON <b>121.7 275.8</b>	CLNC DEL <b>126.725 256.7</b>
--------------------------------	------------------------------------	-----------------------------	-------------------------------	----------------------------------



CAUTION: Environmentally sensitive area flights along Andersen cliffline restricted to 1000' AGL or above.

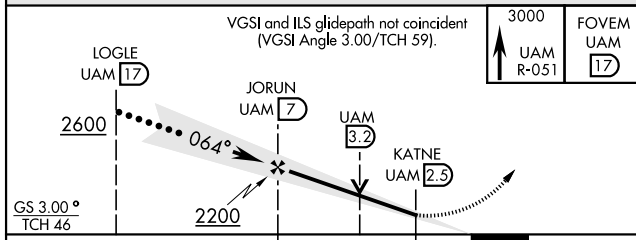
All touchdown zones have a 1.0% down slope.



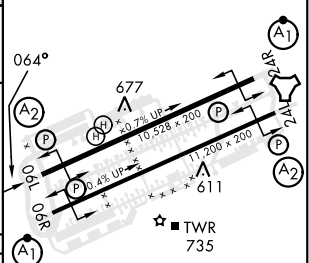
PAC, 20 FEB 2025 to 17 APR 2025

PAC, 20 FEB 2025 to 17 APR 2025

EMERG SAFE ALT 100 NM 2900



ELEV 617	TDZE 539
----------	----------



CATEGORY	A	B	C	D	E
S-ILS 06L	739/40		200	(200-3/4)	
S-LOC 06L*	1020/40	481 (500-3/4)	1020/60	481	(500-1 1/2)
** CIRCLING	1060-1 443 (500-1)	1080-1 463 (500-1)	1240-1 3/4 623 (700-1 3/4)	1240-2 623 (700-2)	1240-2 1/4 623 (700-2 1/4)

HIRL all rwys

# HI-ILS Y or LOC/DME Y RWY 06L