

YIGO, GUAM I, GUAM

ILS Z or LOC/DME Z RWY 24R

LOC I-YIG 109.3	APCH CRS 244°	Rwy ldg 10,528 TDZE 617 Arprt Elev 617
---------------------------	-------------------------	--

AL-2147 [USAF]

ANDERSEN AFB (PGUA)

▼ * When ALS inop, increase RVR to 40, vis to ¾ mile.
 ** When ALS inop, increase RVR to 55, vis to 1 mile.
 *** Circling not authorized NW of Rwy 06L-24R.

ALSF-1

MISSED APPROACH: Climb to 1100, then climbing left turn to 3000 to intercept UAM R-063 direct FABED and hold.

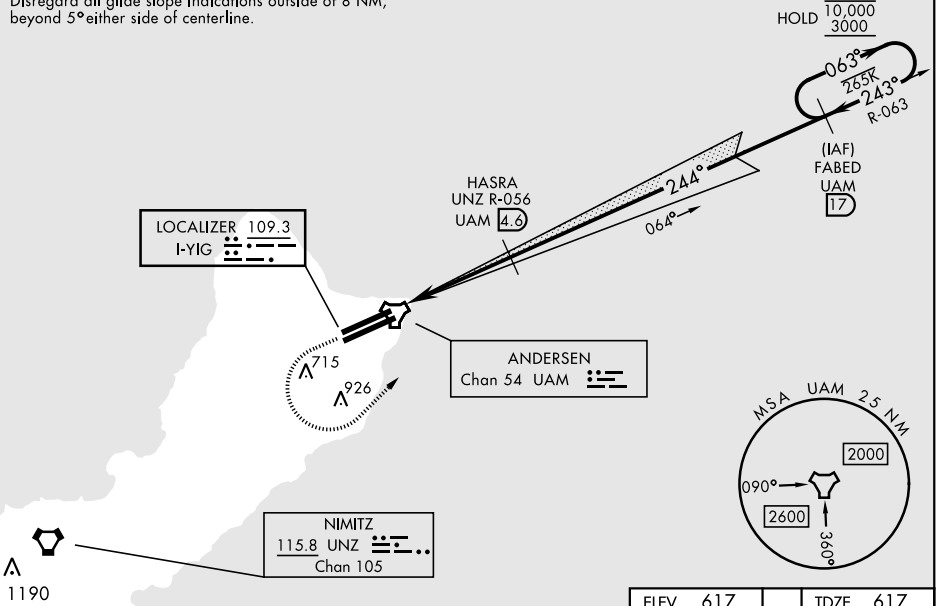
ATIS 118.175 254.325	GUAM APP CON 119.8 269.0	TOWER 126.2 233.7	GND CON 121.7 275.8	CLNC DEL 126.725 256.7
--------------------------------	------------------------------------	-----------------------------	-------------------------------	----------------------------------

CAUTION: Environmentally Sensitive Area
 Flights along Andersen cliffline
 restricted to 1000' AGL or above.

All touchdown zones
 have a 1.0% down slope.

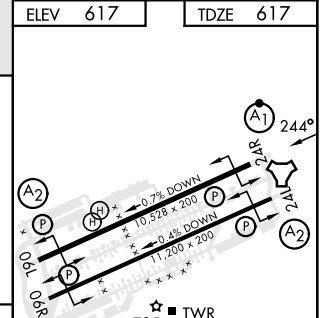
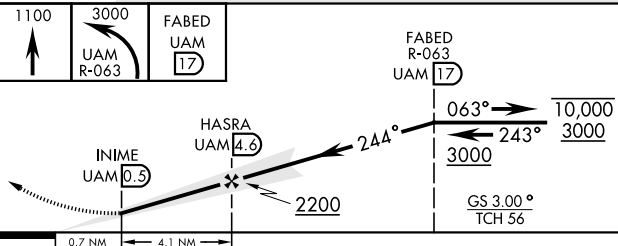
Disregard all glide slope indications outside of 8 NM,
 beyond 5° either side of centerline.

PAC, 20 FEB 2025 to 17 APR 2025

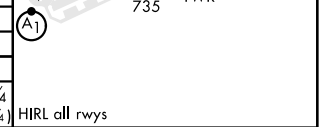


PAC, 20 FEB 2025 to 17 APR 2025

ELEV 617	TDZE 617
----------	----------



CATEGORY	A	B	C	D	E
S-ILS 24R*	817/24 200 (200-½)				
S-LOC 24R**	940/24 323 (400-½)	940/26 323 (400-½)			
*** CIRCLING	1060-1	1080-1	1240-1¾	1240-2	1240-2¼
	443 (500-1)	463 (500-1)	623 (700-1¾)	623 (700-2)	623 (700-2¼)



YIGO, GUAM I, GUAM

13° 35'N-144° 56'E

ANDERSEN AFB (PGUA)

Orig 12AUG21
TERPS

ILS Z or LOC/DME Z RWY 24R