

YIGO, GUAM I, GUAM

ILS Z or LOC/DME Z RWY 06L

LOC I-AND 109.3	APCH CRS 064°	Rwy Ldg 10,528 TDZE 539 Arprt Elev 617
---------------------------	-------------------------	--

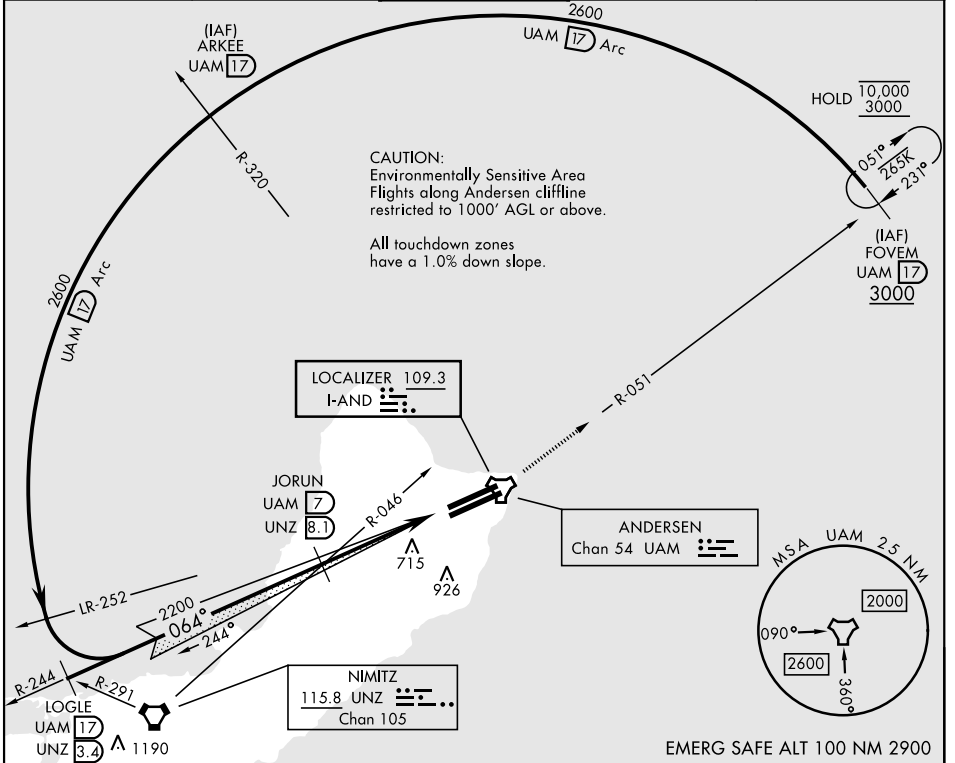
AL-2147 [USAF]

ANDERSEN AFB (PGUA)

▼ *When ALS inop, increase CAT AB RVR to 55, vis to 1 mile; CAT CDE vis to 1 3/4 miles.
**Circling not authorized NW of Rwy 06L-24R.

SALS MISSED APPROACH: Climb to 3000, intercept UAM R-051 to FOVEM and hold.

ATIS 118.175 254.325	GUAM APP CON 119.8 269.0	TOWER 126.2 233.7	GND CON 121.7 275.8	CLNC DEL 126.725 256.7
--------------------------------	------------------------------------	-----------------------------	-------------------------------	----------------------------------



PAC, 20 FEB 2025 to 17 APR 2025

PAC, 20 FEB 2025 to 17 APR 2025

VGSI and ILS Glidepath not Coincident (VGSI Angle 3.00/TCH 59).		ELEV 617	TDZE 539		
		FOVEM UAM 17			
CATEGORY	A	B	C	D	E
S-ILS 06L	739/40		200	(200-3/4)	
S-LOC 06L*	1020/40 481 (500-3/4)		1020/60	481	(500-1 1/2)
CIRCLING **	1060-1 443 (500-1)	1080-1 463 (500-1)	1240-1 3/4 623 (700-1 3/4)	1240-2 623 (700-2)	1240-2 1/4 623 (700-2 1/4)
HIRL all rwys					
FAF to MAP 4.5 NM					
Knots 60 90 120 150 180					
Min:Sec 4:30 3:00 2:15 1:48 1:30					

YIGO, GUAM I, GUAM

13° 35' N-144° 56' E

ANDERSEN AFB (PGUA)

Amdt 1 08SEP22
TERPS

ILS Z or LOC/DME Z RWY 06L