

YIGO, GUAM I, GUAM

RNAV (GPS) RWY 06L

APCH CRS 064°	Rwy Idg TDZE Arprt Elev	10,528 539 617
-------------------------	-------------------------------	---

(USAF)

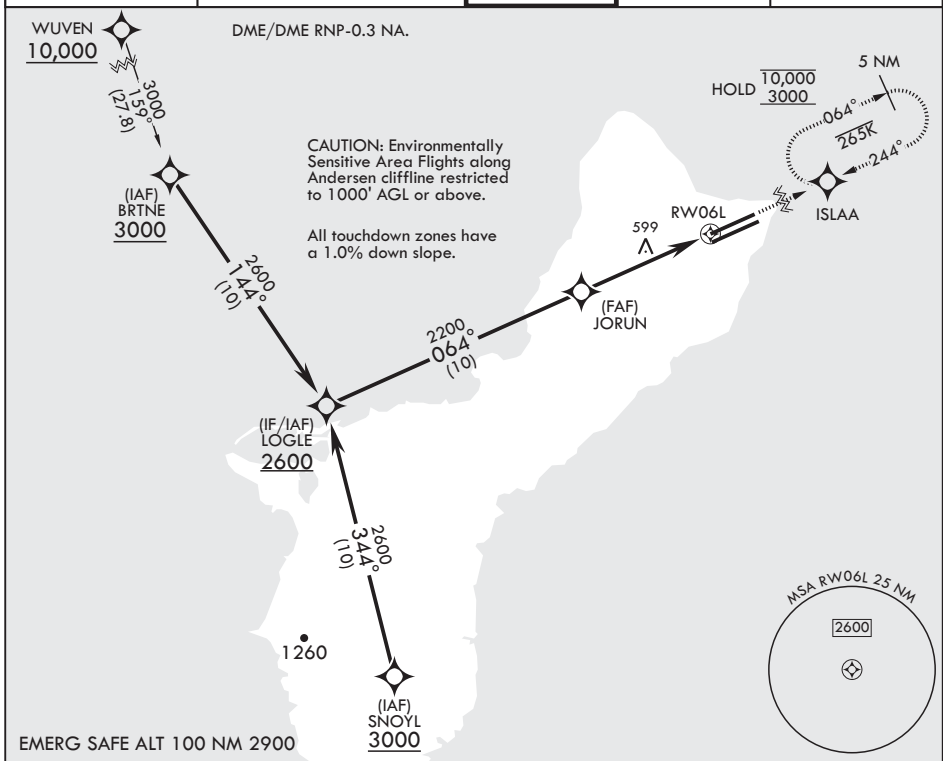
ANDERSEN AFB (PGUA)

RNP APCH

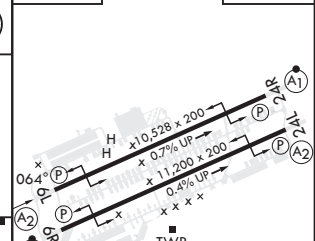
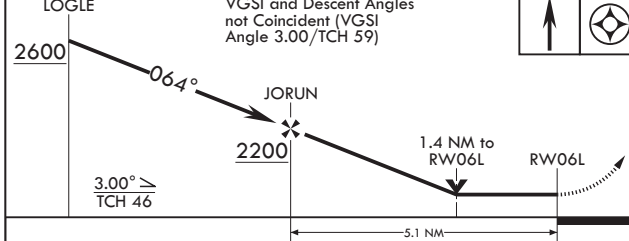
▼ * When ALS inop increase CAT AB RVR to 55, vis to 1 mile; CAT CDE vis to 1 3/8 miles.
 ** Circling not authorized NW of Rwy 06L-24R.
 Circling not authorized to Rws 06L and 24R.

SALS MISSED APPROACH: Climb to 3000 direct ISLAA and hold.

ATIS 118.175 254.325	GUAM APP CON/DEP CON 119.8 269.0	TOWER 126.2 233.7	GND CON 121.7 275.8	CLNC DEL 126.725 256.7
--------------------------------	--	-----------------------------	-------------------------------	----------------------------------



LOGLE	VGSI and Descent Angles not Coincident (VGSI Angle 3.00/TCH 59)	3000	ISLAA	ELEV 617	TDZE 539
-------	---	------	-------	----------	----------



CATEGORY	A	B	C	D	E
LNVA MDA*	1040/40 501 (500-3/4)	1040-1 1/4 501 (500-1 1/4)	1040-1 1/4 501 (500-1 1/4)	1240-2 623 (700-2)	1240-2 1/4 623 (700-2 1/4)
☐ CIRCLING**	1060-1 443 (500-1)	1080-1 463 (500-1)	1240-1 3/4 623 (700-1 3/4)	1240-2 623 (700-2)	1240-2 1/4 623 (700-2 1/4)

HIRL all Rws

YIGO, GUAM I, GUAM 13°35'N - 144°56'E ANDERSEN AFB (PGUA)

Amdt 1 17JUN21 TERPS **RNAV (GPS) RWY 06L**

PAC, 20 FEB 2025 to 17 APR 2025

PAC, 20 FEB 2025 to 17 APR 2025