

YIGO, GUAM I, GUAM

RNAV (GPS) RWY 06R

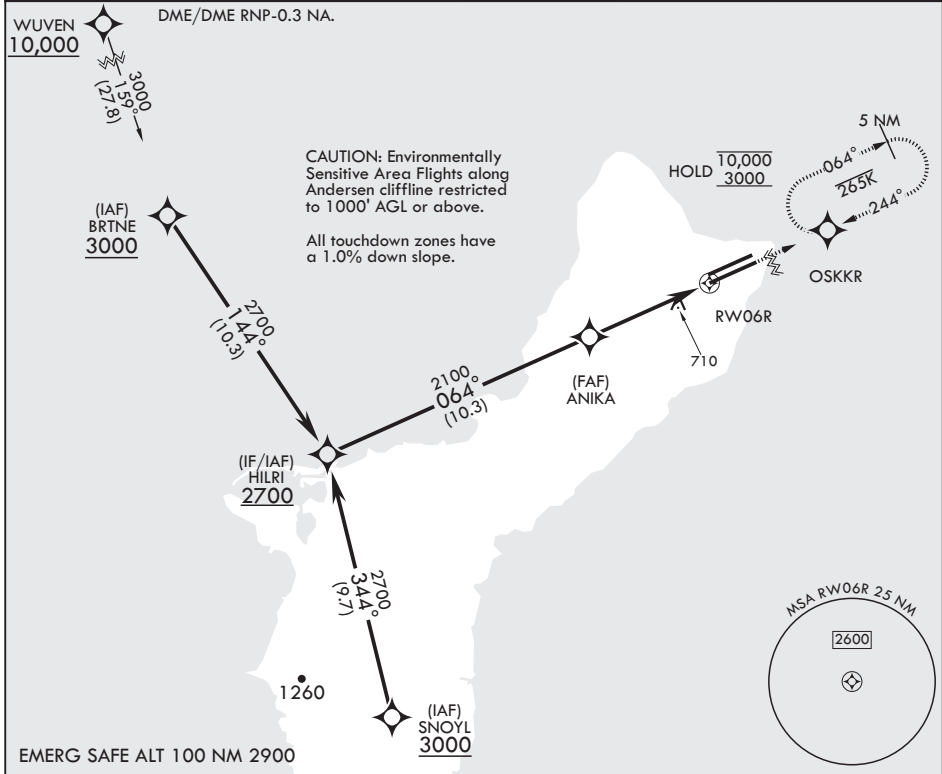
APCH CRS	Rwy Idg	11,200
064°	TDZE	557
	Arprt Elev	617

-(USAF)

ANDERSEN AFB (PGUA)

RNP APCH	ALS-1	MISSED APPROACH: Climb to 3000 direct OSKKR and hold.
<p>▼ * When ALS inop, increase CAT AB RVR to 55, vis to 1 mile; CAT CDE vis to 1 3/8 miles. ** Circling not authorized NW of Rwy 6L-24R.</p>		

ATIS	GUAM APP CON/DEP CON	TOWER	GND CON	CLNC DEL
118.175 254.325	119.8 269.0	126.2 233.7	121.7 275.8	126.725 256.7



HILRI	2700	064°	ANIKA	2100	1.4 NM to RWY06R	RWY06R	3000 OSKKR	ELEV 617	TDZE 557
		3.00° TCH 44			4.7 NM				
CATEGORY	A	B	C	D	E				
LNAV MDA*	1040/24 483 (500-½)		1040/50 483 (700-1¼)		(500-1)				
CIRCLING**	1060-1 443 (500-1)	1080-1 463 (500-1)	1240-1¾ 623 (700-1¼)	1240-2 623 (700-2)	1240-2¼ 623 (700-2¼)	HILRI all Rwys			

YIGO, GUAM I, GUAM

13°35'N - 144°56'E

ANDERSEN AFB (PGUA)

Amdt 1 17JUN21
TERPS

RNAV (GPS) RWY 06R

PAC, 20 FEB 2025 to 17 APR 2025

PAC, 20 FEB 2025 to 17 APR 2025