

YIGO, GUAM I, GUAM

TACAN Y RWY 06L

VORTAC UNZ 115.8 Chan T05	APCH CRS 053°	Rwy ldg TDZE 539 Arprt Elev 617
---	-------------------------	---

- (USAF)

ANDERSEN AFB (PGUA)

RADAR or DME required

▼ * When ALS inop, increase CAT AB RVR to 55 and vis to 1 mile, CAT CDE vis to 1 1/2 miles.
** Circling not authorized NW of Rwy 06L-24R.

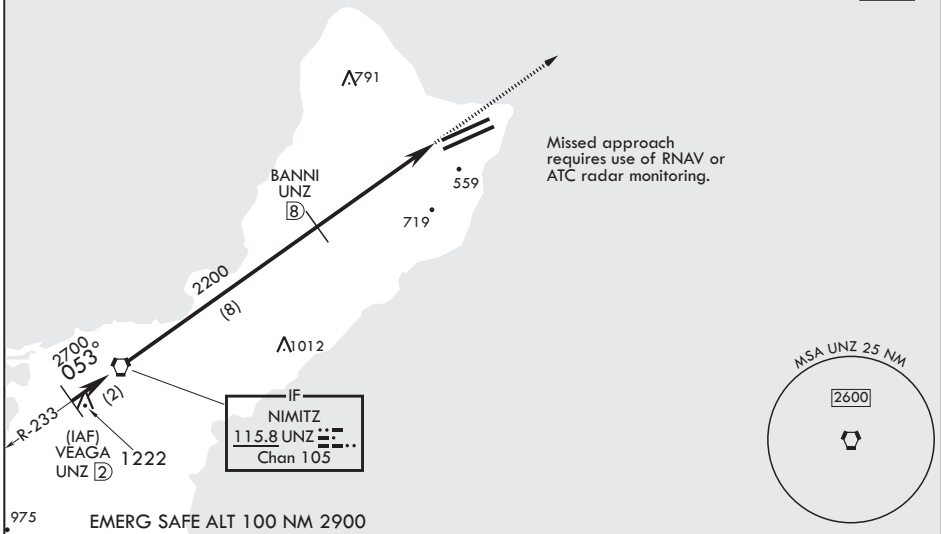
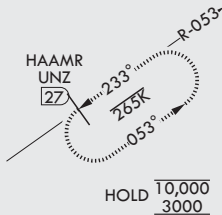


MISSED APPROACH: Climb to 3000, intercept UNZ R-053 to HAAMR and hold.

ATIS 118.175 254.325	GUAM APP CON/DEP CON 119.8 269.0	TOWER 126.2 233.7	GND CON 121.7 275.8	CLNC DEL 126.725 256.7
--------------------------------	--	-----------------------------	-------------------------------	----------------------------------

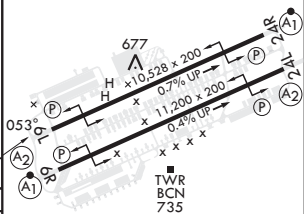
CAUTION: Environmentally Sensitive Area Flights along Anderson cliff line restricted to 1000' AGL or above.

All touchdown zones have a 1.0% down slope.



Missed approach requires use of RNAV or ATC radar monitoring.

VEAGA UNZ 2	VORTAC	BANNI UNZ 8	FAYZR UNZ 12.8	3000 UNZ R-053	HAAMR UNZ 27	ELEV 617	TDZE 539
2700		2200		4.8 NM			
053°		2.99° TCH 59					
CATEGORY	A	B	C	D	E		
S-6L*	1060/40	521 (500-¾)	1060-1¼	521	(500-1¼)		
CIRCLING**	1060-1 443 (500-1)	1080-1 463 (500-1)	1240-1¾ 623 (700-1¾)	1240-2 623 (700-2)	1240-2¼ 623 (700-2¼)	HIRL all Rwys	



YIGO, GUAM I, GUAM

13°35'N - 144°56'E

ANDERSEN AFB (PGUA)

Amtd 3 10AUG23
TERPS

TACAN Y RWY 06L

PAC, 20 FEB 2025 to 17 APR 2025

PAC, 20 FEB 2025 to 17 APR 2025