

YIGO, GUAM I, GUAM

TACAN Z RWY 24R

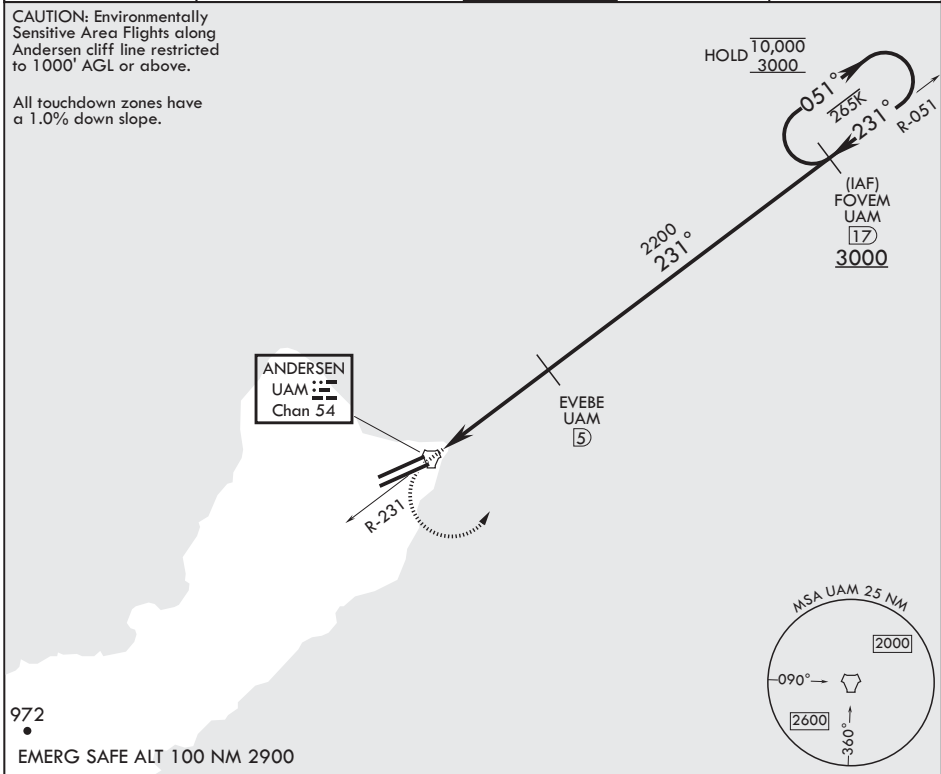
TACAN UAM Chan 54	APCH CRS 231°	Rwy Idg 10,528
		TDZE 617
		Arprt Elev 617

-(USAF)

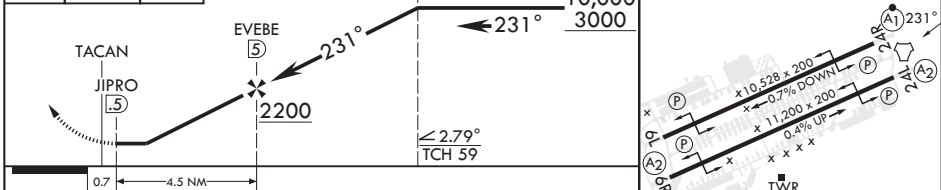
ANDERSEN AFB (PGUA)

RADAR or DME required.		ALSF-1	MISSED APPROACH: Climb to 1100, then climbing left turn to 3000 to intercept UAM R-051 to FOVEM and hold.
<p>▼ * When ALS inop, increase CAT AB RVR to 55, vis to 1 mile; CAT CDE RVR to 50, vis to 1 mile.</p> <p>** Circling not authorized NW of Rwy 06L-24R.</p>			

ATIS 118.175 254.325	GUAM APP CON/DEP CON 119.8 269.0	TOWER 126.2 233.7	GND CON 121.7 275.8	CLNC DEL 126.725 256.7
--------------------------------	--	-----------------------------	-------------------------------	----------------------------------



1100	3000	FOVEM UAM (17)	VGSI and ILS glidepath not coincident (VGSI angle 3.00/TCH 59).	FOVEM UAM (17)	ELEV 617	TDZE 617
------	------	----------------	---	----------------	----------	----------



CATEGORY	A	B	C	D	E
S-24R*	940/24 323 (400-½)		940/40 323 (400-¾)		
CIRCLING**	1060-1 443 (500-1)	1080-1 463 (500-1)	1240-1¾ 623 (700-1¾)	1240-2 623 (700-2)	1240-2¼ 623 (700-2¼)

HIRL all Rwys

YIGO, GUAM I, GUAM

13°35'N - 144°56'E

ANDERSEN AFB (PGUA)

Amdt 2 17JUN21
TERPS

TACAN Z RWY 24R

PAC, 20 FEB 2025 to 17 APR 2025

PAC, 20 FEB 2025 to 17 APR 2025