

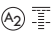
YIGO, GUAM I, GUAM

TACAN Z RWY 06L

TACAN UAM Chan 54	APCH CRS 065°	Rwy Idg TDZE Arprt Elev	10,528 539 617
----------------------	------------------	-------------------------------	----------------------

-(USAF)

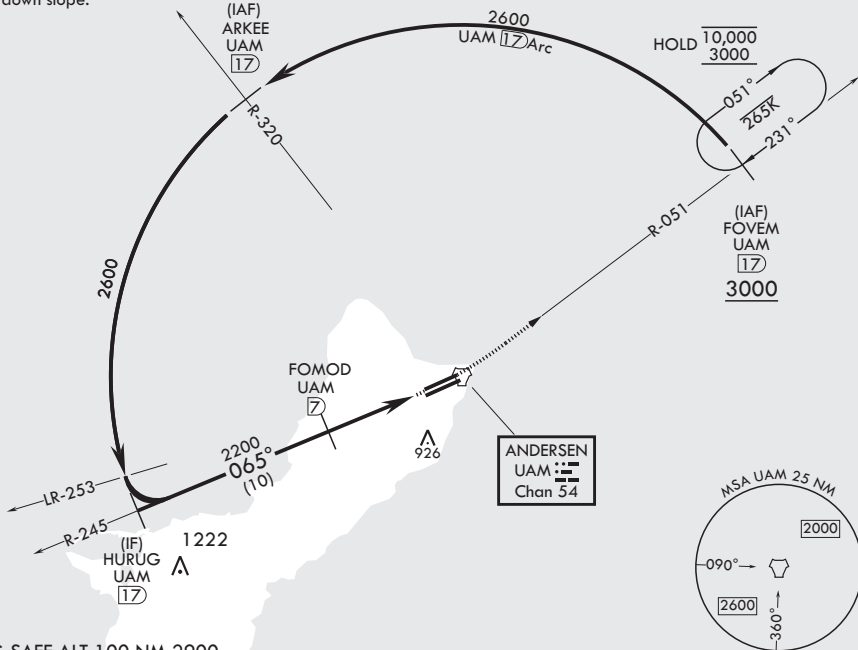
ANDERSEN AFB (PGUA)

RADAR or DME required.	SALS 	MISSED APPROACH: Climb to 3000, intercept UAM R-051 to FOVEM and hold.
<p>▼ * When ALS inop, increase CAT AB RVR to 55, vis to 1 mile, CAT CDE vis 1 3/8 miles.</p> <p>** Circling not authorized NW of Rwy 06L-24R.</p>		

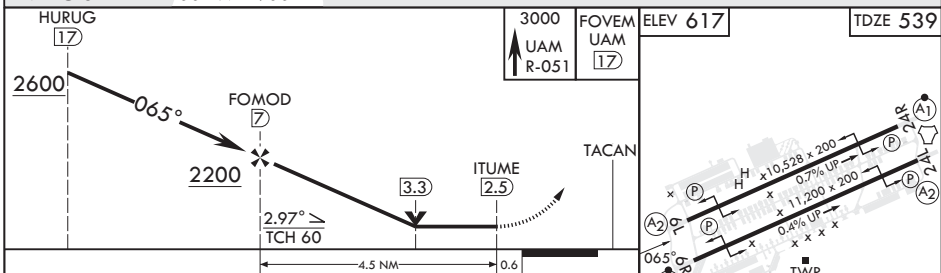
ATIS 118.175 254.325	GUAM APP CON/DEP CON 119.8 269.0	TOWER 126.2 233.7	GND CON 121.7 275.8	CLNC DEL 126.725 256.7
-------------------------	-------------------------------------	----------------------	------------------------	---------------------------

CAUTION: Environmentally Sensitive Area. Flights along Andersen cliffline restricted to 1000' AGL or above

All touchdown zones have a 1.0% down slope.



EMERG SAFE ALT 100 NM 2900



CATEGORY	A	B	C	D	E
S-6L*	1040/40 501 (500-¾)		1040-1¼ 501 (500-1¼)		
C CIRCLING**	1060-1 443 (500-1)	1080-1 463 (500-1)	1240-1¾ 623 (700-1¾)	1240-2 623 (700-2)	1240-2¼ 623 (700-2¼)



YIGO, GUAM I, GUAM

13°35'N - 144°56'E

ANDERSEN AFB (PGUA)

Amdt 3 30NOV23
TERPS

TACAN Z RWY 06L

PAC, 20 FEB 2025 to 17 APR 2025

PAC, 20 FEB 2025 to 17 APR 2025