


YIGO, GUAM I, GUAM

# TACAN Z RWY 06R

TACAN UAM Chan 54	APCH CRS 060°	Rwy Idg TDZE Arprt Elev	11,200 557 617
----------------------	------------------	-------------------------------	----------------------

-(USAF)

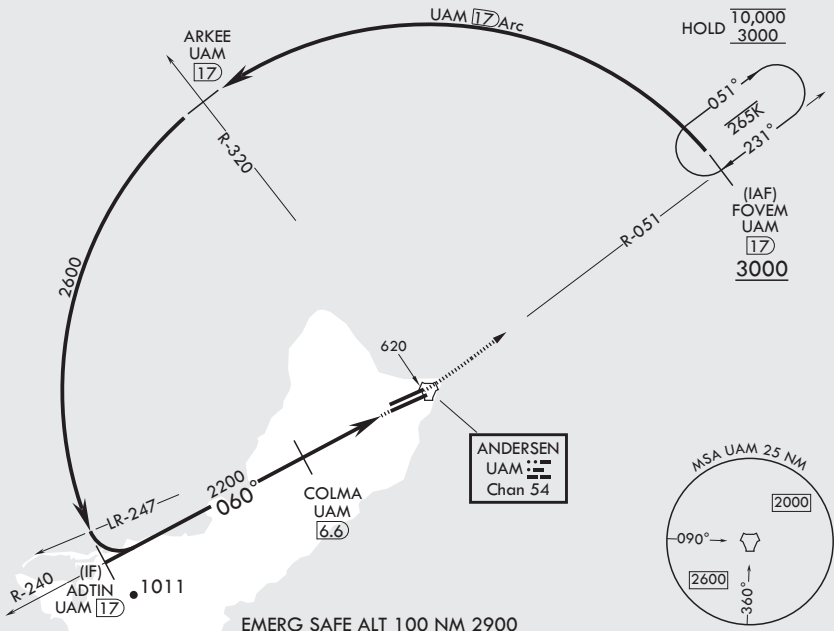
ANDERSEN AFB (PGUA)

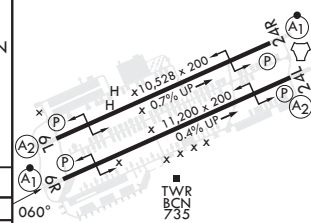
RADAR or DME required.		ALSF-1 	MISSED APPROACH: Climb to 3000, intercept UAM R-051 to FOVEM and hold.
<p><b>V</b> * When ALS inop, increase CAT AB RVR to 55, vis to 1 mile, CAT CDE vis to 1 3/8 miles. ** Circling not authorized NW of Rwy 06L-24R.</p>			

ATIS <b>118.175 254.325</b>	GUAM APP CON/DEP CON <b>119.8 269.0</b>	TOWER <b>126.2 233.7</b>	GND CON <b>121.7 275.8</b>	CLNC DEL <b>126.725 256.7</b>
--------------------------------	--	-----------------------------	-------------------------------	----------------------------------

CAUTION: Environmentally sensitive area flights along Andersen cliff line restricted to 1000' AGL or above.

All touchdown zones have a 1.0% down slope.



ADTIN 17	VGS1 and descent angles not coincident (VGS1 angle 3.00/TCH 44).		3000 UAM R-051	FOVEM UAM 17	ELEV 617	TDZE 557
2600	060°	COLMA 6.6	2200	3.4	FAXEL 2.5	TACAN
3.28° ≥ TCH 43		4.1 NM		.5		
CATEGORY	A	B	C	D	E	
S-6R*	1040/24 483 (500-½)		1040/50 483 (500-1)			
CIRCLING**	1060-1 443 (500-1)	1080-1 463 (500-1)	1240-1¼ 623 (700-1¼)	1240-2 623 (700-2)	1240-2¼ 623 (700-2¼)	HIRL all Rwys

YIGO, GUAM I, GUAM

13°35'N - 144°56'E

ANDERSEN AFB (PGUA)

Amdt 2 17JUN21  
TERPS

# TACAN Z RWY 06R

PAC, 20 FEB 2025 to 17 APR 2025

PAC, 20 FEB 2025 to 17 APR 2025