

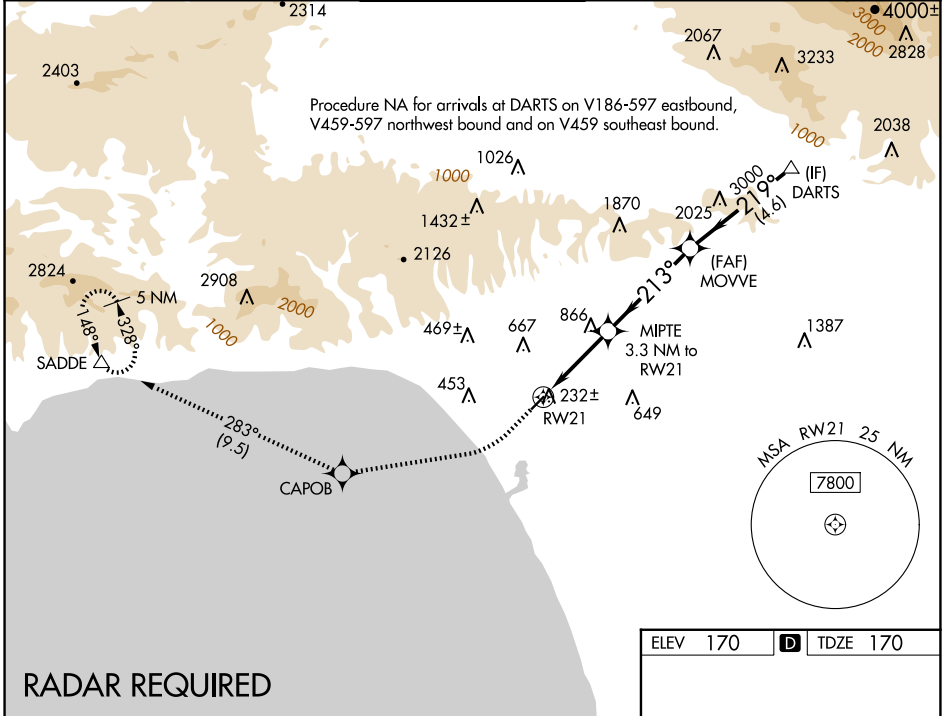
WAAS CH <b>90339</b> <b>W21A</b>	APP CRS <b>213°</b>	Rwy ldg TDZE Apt Elev	<b>3500</b> <b>170</b> <b>170</b>
--	------------------------	-----------------------------	---

# RNAV (GPS) RWY 21

SANTA MONICA MUNI (SMO)

RNP APCH.	MISSED APPROACH: Climb to 600 then climbing right turn to 5000 direct CAPOB and on track 283° to SADDE and hold, continue climb-in-hold to 5000.
<p>▼ For uncompensated Baro-VNAV systems, LNAV/VNAV NA below 5°C (41°F) or above 14°C (58°F). Rwy 21 helicopter visibility reduction below 1 SM NA.</p>	

ATIS <b>119.15</b>	SOCAL APP CON <b>135.05 317.5</b>	SANTA MONICA TOWER * <b>120.1</b> (CTAF) <b>257.8</b>	GND CON <b>121.9</b>	UNICOM <b>122.95</b>
-----------------------	--------------------------------------	--	-------------------------	-------------------------



SW-3, 20 MAR 2025 to 17 APR 2025

SW-3, 20 MAR 2025 to 17 APR 2025

## RADAR REQUIRED

