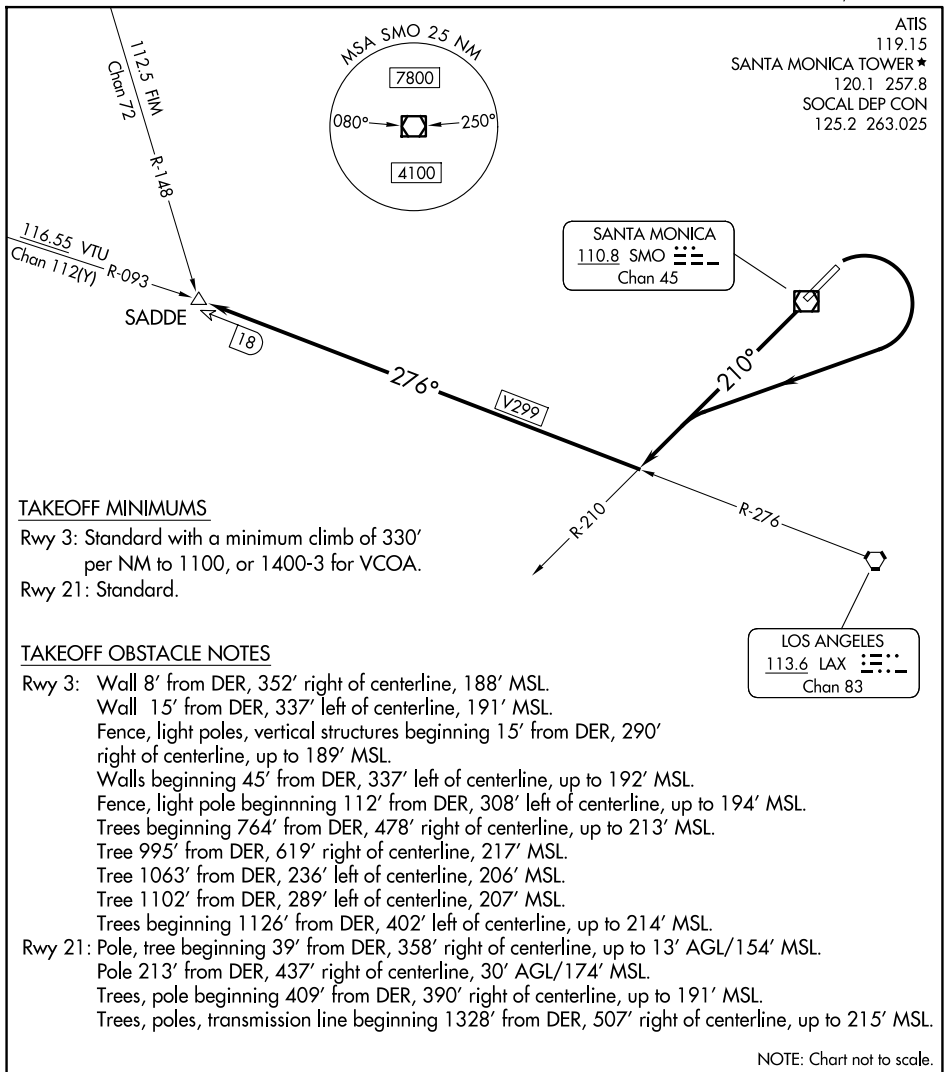


TOPANGA THREE DEPARTURE (OBSTACLE)



TAKEOFF MINIMUMS

Rwy 3: Standard with a minimum climb of 330' per NM to 1100, or 1400-3 for VCOA.
 Rwy 21: Standard.

TAKEOFF OBSTACLE NOTES

Rwy 3: Wall 8' from DER, 352' right of centerline, 188' MSL.
 Wall 15' from DER, 337' left of centerline, 191' MSL.
 Fence, light poles, vertical structures beginning 15' from DER, 290' right of centerline, up to 189' MSL.
 Walls beginning 45' from DER, 337' left of centerline, up to 192' MSL.
 Fence, light pole beginning 112' from DER, 308' left of centerline, up to 194' MSL.
 Trees beginning 764' from DER, 478' right of centerline, up to 213' MSL.
 Tree 995' from DER, 619' right of centerline, 217' MSL.
 Tree 1063' from DER, 236' left of centerline, 206' MSL.
 Tree 1102' from DER, 289' left of centerline, 207' MSL.
 Trees beginning 1126' from DER, 402' left of centerline, up to 214' MSL.

Rwy 21: Pole, tree beginning 39' from DER, 358' right of centerline, up to 13' AGL/154' MSL.
 Pole 213' from DER, 437' right of centerline, 30' AGL/174' MSL.
 Trees, pole beginning 409' from DER, 390' right of centerline, up to 191' MSL.
 Trees, poles, transmission line beginning 1328' from DER, 507' right of centerline, up to 215' MSL.

NOTE: Chart not to scale.

DEPARTURE ROUTE DESCRIPTION

TAKEOFF RUNWAY 3: Climbing right turn to 5000 on SMO R-210 and on LAX R-276 to SADDE INT.

TAKEOFF RUNWAY 21: Climb to 5000 on SMO R-210 and on LAX R-276 to SADDE INT.

VCOA RUNWAY 3: Obtain ATC approval for VCOA when requesting IFR clearance. Climb in visual conditions to cross SMO VOR/DME at or above 1400, then continue climb to 5000 on SMO R-210 and LAX R-276 to SADDE INT.

SW-3, 20 MAR 2025 to 17 APR 2025

SW-3, 20 MAR 2025 to 17 APR 2025