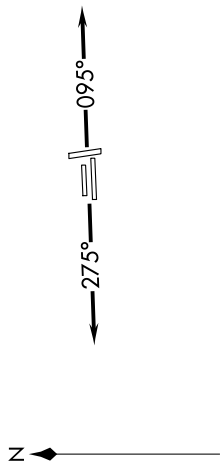


EC-1, 20 MAR 2025 to 17 APR 2025

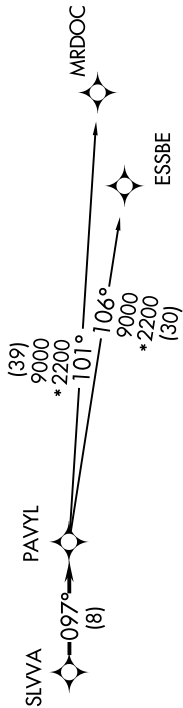
**TOP ALTITUDE:
ASSIGNED BY ATC**

RNAV 1 - DME/DME/IRU or GPS.
RADAR required.

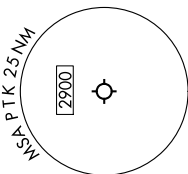


NOTE: Jet departures at/above 10000,
maintain 280K until advised by ATC.

ATIS
125.025
CLNC DEL
118.25
GND CON
121.9
PONTIAC TOWER *
120.5 (CTAF)
DETROIT DEP CON
132.35 284.0



TAKEOFF MINIMUMS:
Rwys 18, 36: NA - Environmental.
Rwys 9L/R, 27L/R: Standard.



NOTE: Chart not to scale.

DEPARTURE ROUTE DESCRIPTION

TAKEOFF RUNWAYS 9L/R: Climb on heading 095° or as assigned by ATC, thence....
TAKEOFF RUNWAYS 27L/R: Climb on heading 275° or as assigned by ATC, thence....

...for RADAR vectors to SLVVA, then on track 097° to PAVYL, then on (transition). Maintain 17000 or as assigned by ATC, expect filed altitude 10 minutes after departure.

ESSBE TRANSITION (PAVYL3.ESSBE):
MRDOC TRANSITION (PAVYL3.MRDOC):

EC-1, 20 MAR 2025 to 17 APR 2025