

LOC/DME I-LHJ <b>111.55</b>	APP CRS <b>201°</b>	Rwy Idg <b>8000</b> TDZE <b>871</b> Apt Elev <b>871</b>
Chan <b>52 (Y)</b>		

# ILS RWY 20 (CAT II)

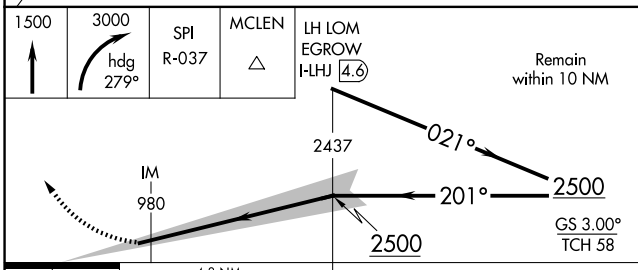
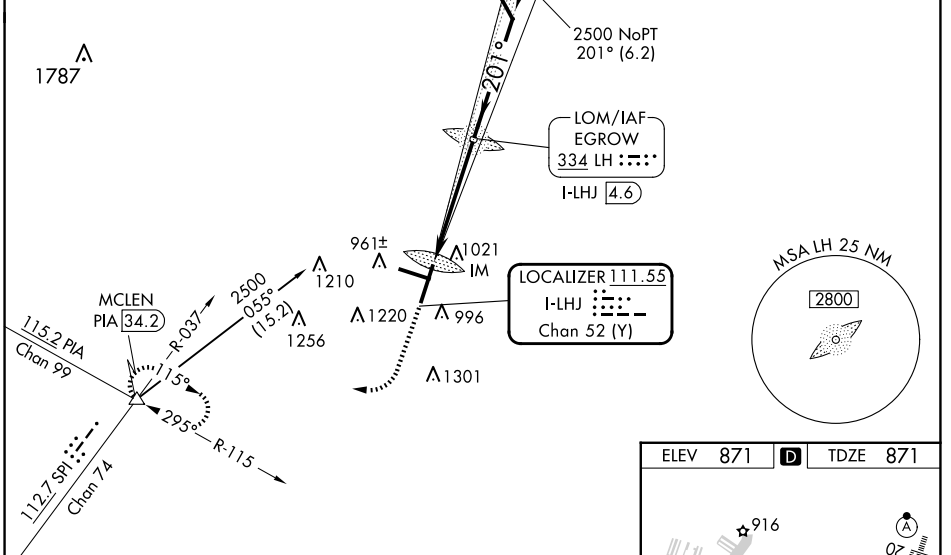
CENTRAL IL RGNL/BLOOMINGTON-NORMAL (BMI)

RADAR required for procedure entry at OLIDE.		ALSIF-2 	MISSED APPROACH: Climb to 1500 then climbing right turn to 3000 on heading 279° and SPI VORTAC R-037 to MCLEN INT/PIA 34.2 DME and hold, continue climb-in-hold to 3000.
Procedure NA when tower closed.			

ATIS <b>119.575</b>	SAINT LOUIS APP CON <b>128.725 256.9</b>	BLOOMINGTON TOWER ★ <b>124.6 (CTAF) 269.575</b>	GND CON <b>121.65</b>	UNICOM <b>122.95</b>
------------------------	---	--	--------------------------	-------------------------

ALTERNATE MISSED APCH FIX

LOM  
EGROW  
I-LHJ **4.6**  
LH : : : :  
**334**



ELEV 871	<b>D</b>	TDZE 871
----------	----------	----------

916

6525 X 150

20

11

129

917±

8000 X 150

TWR 972

2

AS

AS

AS

AS

CATEGORY	A	B	C	D
S-ILS-20	RA 122/12 100 DA 971			

## CATEGORY II ILS - SPECIAL AIRCREW & AIRCRAFT CERTIFICATION REQUIRED

TDZ/CL Rwy 20 **1**  
HIRL Rwy 2-20 and 11-29 **1**

EC-3, 20 MAR 2025 to 17 APR 2025

EC-3, 20 MAR 2025 to 17 APR 2025