

LOC/DME I-BMI 110.95 Chan 46 (Y)	APP CRS 291°	Rwy Idg TDZE Apt Elev	6525 871 871
--	------------------------	-----------------------------	---


ILS or LOC RWY 29

CENTRAL IL RGNL/BLOOMINGTON-NORMAL (BMI)

DME required. RADAR required for procedure entry at ANNAY OM.

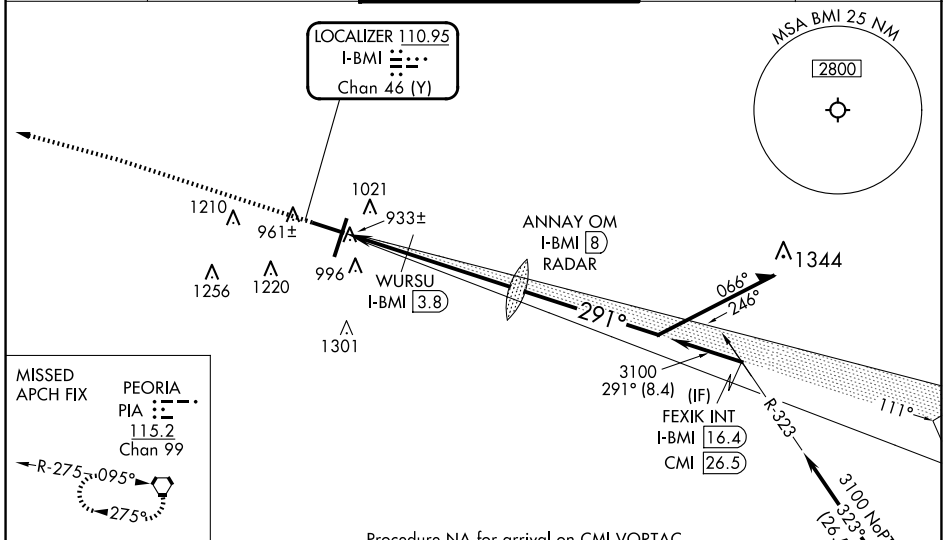
▽ VDP NA when using PIA altimeter setting. For inop ALS, increase S-LOC 29 Cats C and D visibility to RVR 5500. When local altimeter setting not received, use PIA altimeter setting; increase S-ILS 29 DA to 1187 feet; increase all MDAs 120 feet and S-LOC 29 visibility Cats C and D to RVR 5000 and Circling visibility Cats C and D ½ SM. For inop ALS when using PIA altimeter setting: increase S-ILS 29 visibility all Cats to RVR 4500 and S-LOC 29 visibility Cats C and D to 1 ½ SM. * RVR 1800 authorized with use of FD or AP or HUD to DA (NA when using PIA altimeter setting).

MALSR



MISSED APPROACH: Climb to 1500 then climbing left turn to 3000 direct PIA VORTAC and hold.

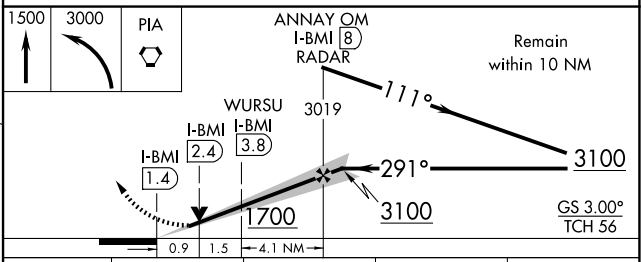
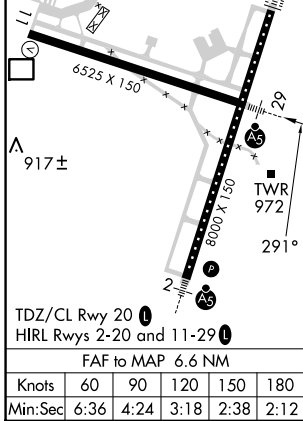
ATIS 119.575	SAINT LOUIS APP CON 128.725 256.9	BLOOMINGTON TOWER * 124.6 (CTAF) 0 269.575	GND CON 121.65	UNICOM 122.95
------------------------	---	---	--------------------------	-------------------------



MISSED APCH FIX PEORIA
PIA [115.2]
Chan 99

R-275 095°
275°

ELEV 871	D	TDZE 871
----------	----------	----------



CATEGORY	A	B	C	D
S-ILS 29 *	1071/24 200 (200-½)			
S-LOC 29	1240/24	369 (400-½)	1240/35	369 (400-¾)
<input checked="" type="checkbox"/> CIRCLING	1340-1	469 (500-1)	1620-2¼ 749 (800-2¼)	1620-2½ 749 (800-2½)

ILS or LOC RWY 29

EC-3, 20 MAR 2025 to 17 APR 2025

EC-3, 20 MAR 2025 to 17 APR 2025