

WAAS CH 69502 W13A	APP CRS 127°	Rwy Idg TDZE Apt Elev	6600 203 208
--	------------------------	-----------------------------	---

RNAV (GPS) RWY 13R

PORTLAND-HILLSBORO (HIO)

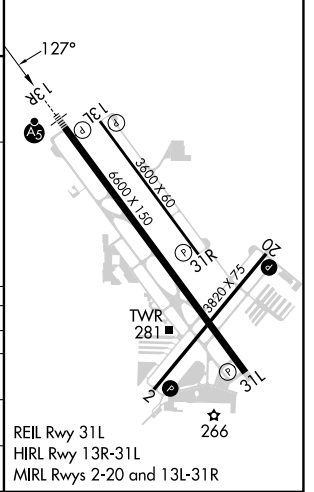
RNP APCH.	MALSR	MISSED APPROACH: Climb to 1000 then climbing right turn to 3000 direct UBG VOR/DME and hold. Continue climb-in-hold to 3000.
<p>⚠ Circling to Rwy 13L-31R NA at night. For uncompensated Baro-VNAV systems, LNAV/VNAV NA below -18°C or above 54°C. For inop ALS, increase LNAV Cat A/B visibility to RVR 5500 and Cat C/D to 1 3/8 SM. # RVR 1800 authorized with use of FD or AP or HUD to DA.</p>		

ATIS 127.65	PORTLAND APP CON 126.0 269.175	HILLSBORO TOWER ★ 119.3 (CTAF) 239.3	GND CON 121.7	UNICOM 122.95
-----------------------	--	--	-------------------------	-------------------------



ELEV	208	TDZE	203
------	-----	------	-----

4 NM Holding Pattern 6000 ← 307° 3900 → 127° GP 3.00° TCH 48	DUCKA	COUVE	DOLLA	UBG
	1000 3000 *LNNAV only.	2900 3300 *1660	2900 *1660 *1.3 NM to RW13R	4.4 NM to RW13R *LNNAV only.
	7.4 NM	3.2 NM	3.9 NM	3.1 NM
CATEGORY	A	B	C	D
LPV DA#		403/24	200 (200-1/2)	
LNAV/VNAV DA		661/45	458 (500-7/8)	
LNAV MDA	660/40	457 (500-3/4)	660/50	457 (500-1)
CIRCLING	680-1 472 (500-1)	720-1 512 (600-1)	720-1 1/2 512 (600-1 1/2)	980-2 1/2 772 (800-2 1/2)



NW-1, 20 MAR 2025 to 17 APR 2025

NW-1, 20 MAR 2025 to 17 APR 2025