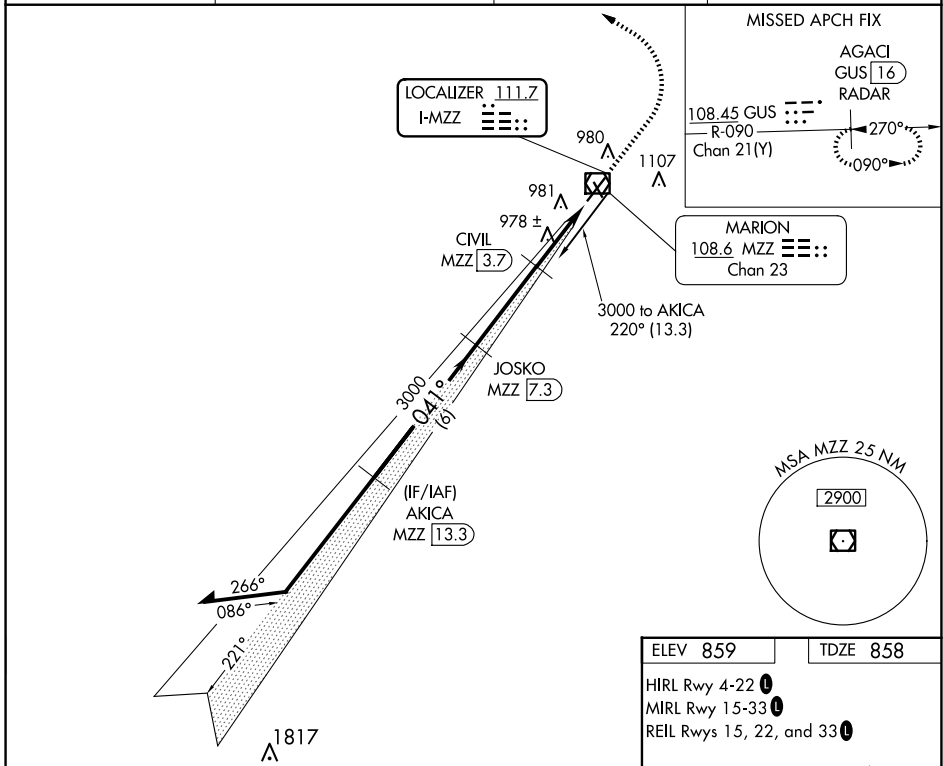


LOC I-MZZ 111.7	APP CRS 041°	Rwy Idg TDZE Apt Elev	6011 858 859
---------------------------	------------------------	-----------------------------	---

ILS or LOC RWY 4

MARION MUNI - MCKINNEY FLD (MZZ)

DME required.		MALSR MZZ	MISSED APPROACH: Climb to 2500 then climbing left turn to 4000 on heading 320° to intercept GUS VORTAC R-090 to AGACI/GUS VORTAC 16 DME/RADAR and hold.
DME from MZZ VOR/DME. Simultaneous reception of I-MZZ and MZZ DME required. For inop ALS, increase S-LOC 4 Cats C and D visibility to 1½ SM. Circling Rwy 15 NA at night.	NA		
AWOS-3 108.6	GRISSOM APP CON ★ 121.05 338.275	CLNC DEL 120.0	UNICOM 122.7 (CTAF)



Remain within 10 NM AKICA MZZ [13.3] JOSKO MZZ [7.3]	2500	4000	GUS R-090 AGACI GUS [16] RADAR
	hdg 320°		
3000 → 041° → 041° → 3000 GS 3.00° TCH 52	3000	1860	CIVIL MZZ [3.7] MZZ [1.8] MZZ [0.7]
	6 NM	3.6 NM	1.9 NM
CATEGORY	A	B	C
S-ILS 4	1058-½		200 (200-½)
S-LOC 4	1260-½	402 (500-½)	1260-¾, 402 (500-¾)
CIRCLING	1300-1 441 (500-1)	1320-1 461 (500-1)	1420-1½ 561 (600-1½), 1500-2 641 (700-2)

ELEV 859	TDZE 858
HIRL Rwy 4-22 MIRL Rwy 15-33 REIL Rwy 15, 22, and 33	
FAF to MAP 6.6 NM	
Knots	60 90 120 150 180
Min:Sec	6:34 4:22 3:17 2:37 2:11

EC-2, 20 MAR 2025 to 17 APR 2025

EC-2, 20 MAR 2025 to 17 APR 2025