

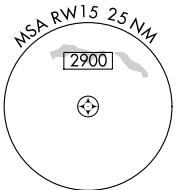
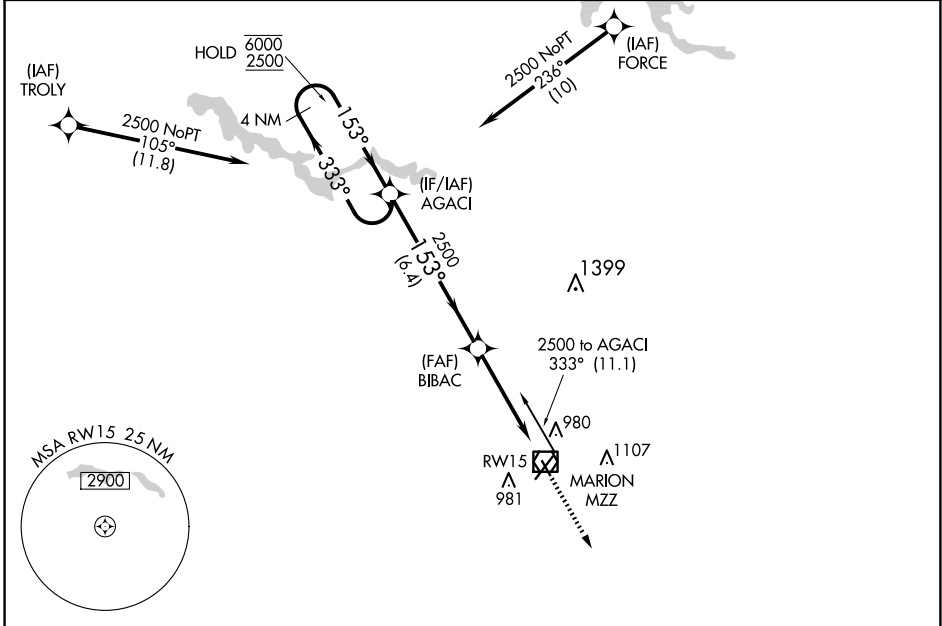
APP CRS <b>153°</b>	Rwy Idg <b>3456</b> TDZE <b>859</b> Apt Elev <b>859</b>
------------------------	---------------------------------------------------------------

# RNAV (GPS) RWY 15

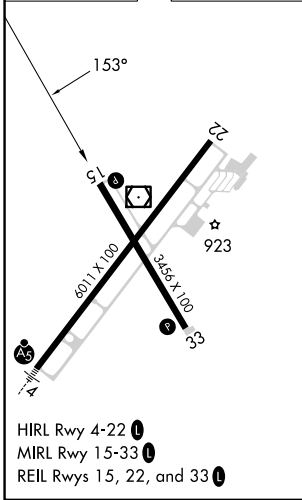
MARION MUNI - MCKINNEY FLD (MZZ)

RNP APCH - GPS.		MISSED APPROACH: Climb to 2500 direct AKUYA and hold.	
Rwy 15 helicopter visibility reduction below 3/4 SM NA. Circling Rwy 15 NA at night.			

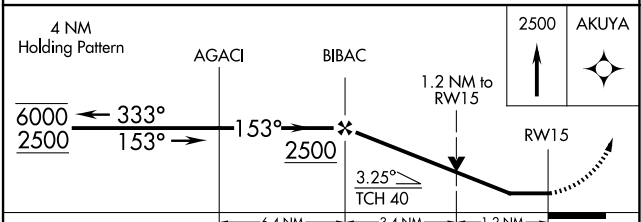
AWOS-3 <b>108.6</b>	GRISSOM APP CON ★ <b>121.05 338.275</b>	CLNC DEL <b>120.0</b>	UNICOM <b>122.7 (CTAF) 0</b>
------------------------	--------------------------------------------	--------------------------	---------------------------------



ELEV 859	TDZE 859
----------	----------



HIRL Rwy 4-22   
 MIRL Rwy 15-33   
 REIL Rwy 15, 22, and 33



CATEGORY	A	B	C	D
LNAV MDA	1300-1	441 (500-1)	1300-1 3/8	441 (500-1 3/8)
CIRCLING	1300-1 441 (500-1)	1320-1 461 (500-1)	1420-1 1/2 561 (600-1 1/2)	1500-2 641 (700-2)

EC-2, 20 MAR 2025 to 17 APR 2025

EC-2, 20 MAR 2025 to 17 APR 2025