

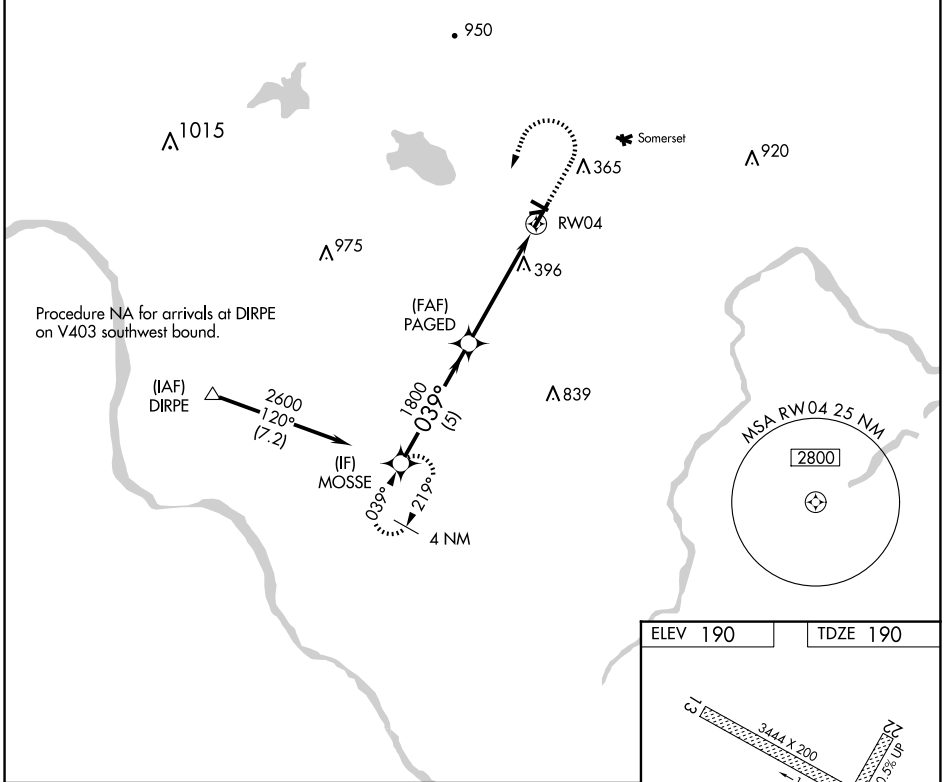
APP CRS	Rwy Idg	<b>5054</b>
<b>039°</b>	TDZE	<b>190</b>
	Apt Elev	<b>190</b>

# RNAV (GPS) RWY 4

SOLBERG/HUNTERDON (N51)

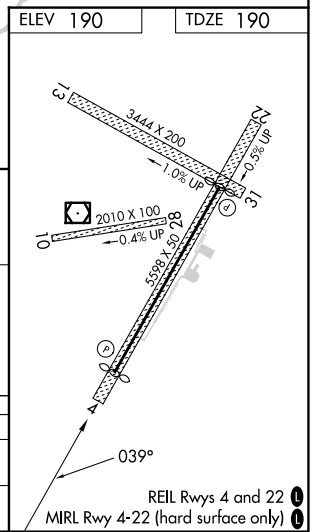
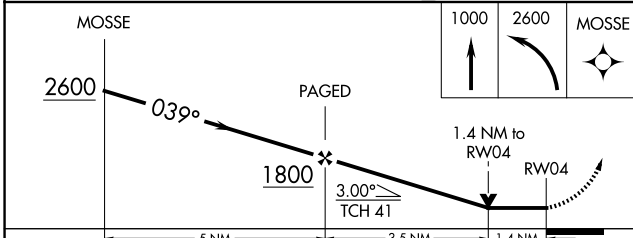
RNP APCH - GPS.	Circling NA to Rwy 10-28 and 13-31. Rwy 4 helicopter visibility reduction below 3/4 SM NA. Obtain local altimeter setting on CTAF, when not received, use Newark Liberty Intl altimeter setting and increase all MDAs 100 feet. VDP NA when using Newark Liberty Intl altimeter setting.	MISSED APPROACH: Climb to 1000 then climbing left turn to 2600 direct MOSSE and hold.
⚠ NA Procedure NA for arrivals at DIRPE on V403 southwest bound.		

NEWARK APP CON <b>132.8 379.9</b>	GCO <b>121.725</b>	UNICOM <b>122.8 (CTAF) 0</b>
--------------------------------------	-----------------------	---------------------------------



NE-2, 20 MAR 2025 to 17 APR 2025

NE-2, 20 MAR 2025 to 17 APR 2025



	MOSSE		1000	2600	MOSSE
	2600		PAGED		
	1800		1.4 NM to RW04		RW04
	5 NM		3.5 NM		1.4 NM
CATEGORY	A	B	C	D	
LNAV MDA	680-1	490 (500-1)	NA		
CIRCLING	680-1 490 (500-1)	760-1 570 (600-1)	NA		