

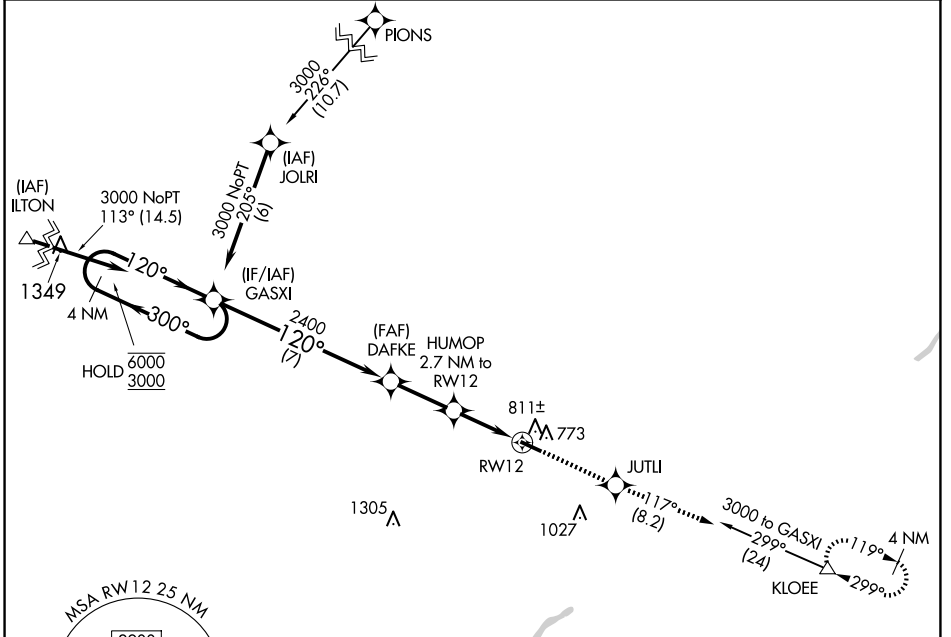
APP CRS	Rwy Idg	<b>4199</b>
<b>120°</b>	TDZE	<b>707</b>
	Apt Elev	<b>707</b>

# RNAV (GPS) RWY 12

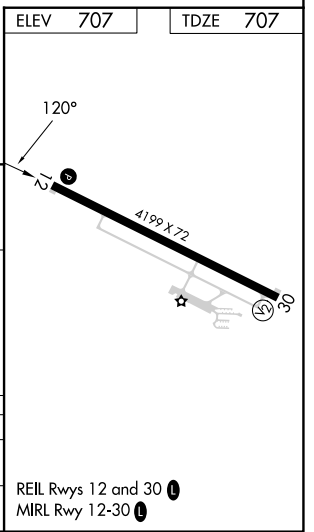
DEFIANCE MEML (DFI)

RNP APCH.	MISSED APPROACH: Climb to 3000 direct JUTLI and on track 117° to KLOEE and hold.
<p><b>▼</b> Circling Rwy 30 NA at night. Rwy 12 helicopter visibility reduction below 3/4 SM NA.</p> <p><b>▲</b></p>	

ASOS <b>121.425</b>	TOLEDO APP CON <b>134.35 307.0</b>	UNICOM <b>122.7 (CTAF)</b>
------------------------	---------------------------------------	-------------------------------



<p>4 NM Holding Pattern</p> <p>GASXI</p> <p>6000 ← 300°</p> <p>3000 → 120°</p> <p>7 NM</p> <p>2.5 NM</p> <p>1.5 NM</p> <p>1.2 NM</p>				<p>3000</p> <p>JUTLI</p> <p>tr 117°</p> <p>KLOEE</p> <p>HUMOP 2.7 NM to RW12</p> <p>3.00 ≥ TCH 40</p> <p>2400</p> <p>1600</p> <p>1.2 NM to RW12</p>		
CATEGORY	A	B	C	D		
RNAV MDA	1100-1	393 (400-1)	1100-1 1/8	393 (400-1 1/8)		
CIRCLING	1140-1 433 (500-1)	1160-1 453 (500-1)	1380-2 673 (700-2)	1380-2 1/4 673 (700-2 1/4)		



EC-2, 20 MAR 2025 to 17 APR 2025

EC-2, 20 MAR 2025 to 17 APR 2025

REIL Rwy 12 and 30  
MIRL Rwy 12-30