

(FOXHL1.FOXHL) 24193

AL-5089 (FAA)

FREDERICK MUNI (F'DK)

FOXHL ONE DEPARTURE (RNAV)

FREDERICK, MARYLAND

POTOMAC DEP CON

126.1 338.25

ATIS

124.875

CLNC DEL

127.425

126.9 (When twr closed)

GND CON

127.425

FREDERICK TOWER ★

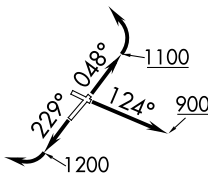
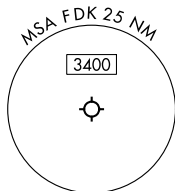
132.4

RNAV 1 - DME/DME/IRU or GPS.

RADAR required.

TOP ALTITUDE:

17000



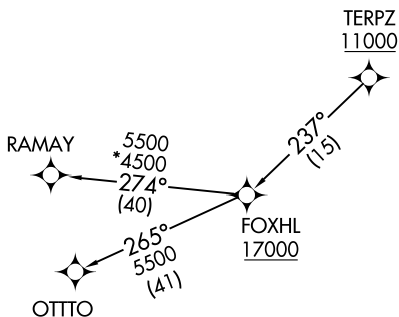
TAKEOFF MINIMUMS:

Rwy 5: 400-3 or Standard with minimum climb of 255'/NM to 600.

Rwy 12: 500-2¾ or Standard with minimum climb of 410'/NM to 800.

Rwy 23: Standard.

Rwy 30: Standard with minimum climb of 340'/NM to 2400.



NOTE: Jet aircraft only.

NOTE: Chart not to scale.



DEPARTURE ROUTE DESCRIPTION

TAKEOFF RUNWAY 5: Climb on heading 048° to 1100 before turning left.

TAKEOFF RUNWAY 12: Climb on heading 124° to 900 before proceeding westbound.

TAKEOFF RUNWAY 23: Climb on heading 229° to 1200 before turning right.

Climb on assigned heading for RADAR vectors to cross TERPZ at or above 11000, thence....

....then on track 237° to cross FOXHL at or above 17000, then on assigned transition. Maintain 17000, expect filed altitude 10 minutes after departure.

OTTO TRANSITION (FOXHL1.OTTO)

RAMAY TRANSITION (FOXHL1.RAMAY)

FOXHL ONE DEPARTURE (RNAV)

(FOXHL1.FOXHL) 11JUL24

FREDERICK, MARYLAND
FREDERICK MUNI (F'DK)

NE-3, 20 MAR 2025 to 17 APR 2025