

LOC I- <b>FDK</b> <b>110.3</b>	APP CRS <b>229°</b>	Rwy ldg <b>5819</b> TDZE <b>297</b> Apt Elev <b>306</b>
-----------------------------------	------------------------	--

# ILS or LOC RWY 23

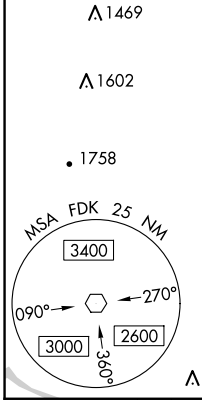
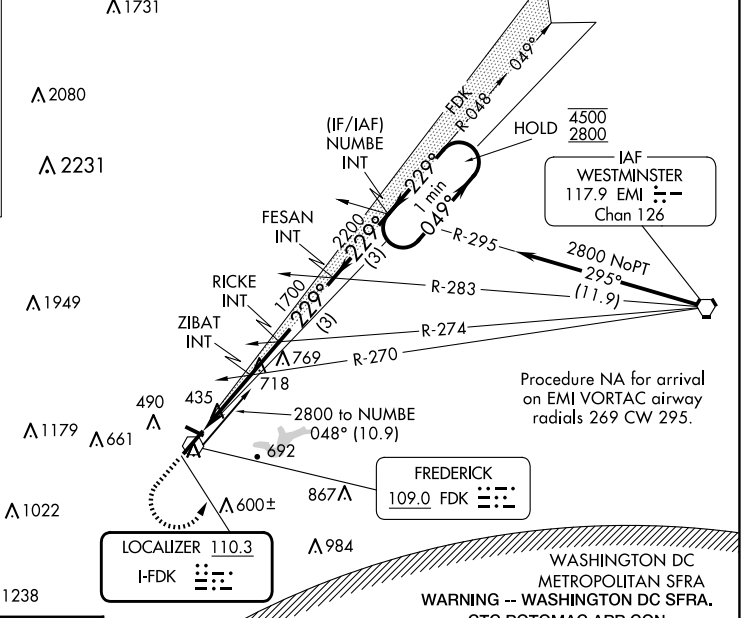
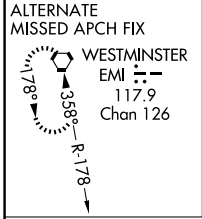
FREDERICK MUNI (F'DK)

**⚠** Circling Rwy 30 NA at night. Rwy 23 helicopter visibility reduction below ¼ SM NA. For inop ALS, increase S-ILS 23 Cat A/B visibility to 1½ SM. For inop ALS, increase S-LOC 23 Cat C/D visibility to 2½ SM. ZIBAT fix minimums: Inop table does not apply to S-LOC 23 Cats C/D.

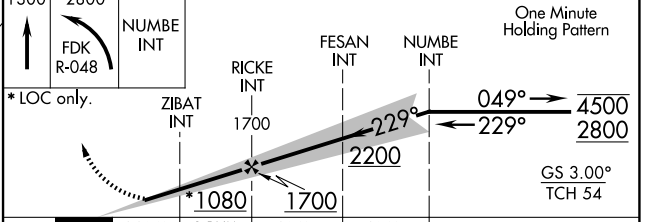
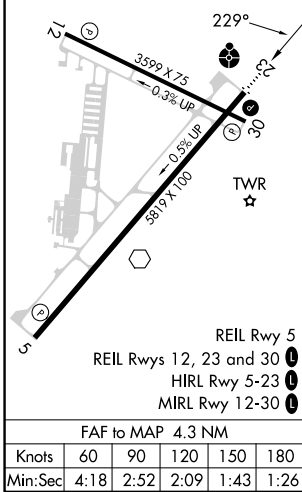
**ODALS**

**MISSED APPROACH:** Climb to 1300 then climbing left turn to 2800 on FDK VOR R-048 to NUMBE INT and hold.

ATIS <b>124.875</b>	POTOMAC APP CON <b>126.1 338.25</b>	FREDERICK TOWER ★ <b>132.4</b> (CTAF) <b>0</b>	GND CON <b>127.425</b>	CLNC DEL <b>127.425</b>	CLNC DEL <b>126.9</b> (When twr closed)	UNICOM <b>122.95</b>
------------------------	--	---	---------------------------	----------------------------	---	-------------------------



ELEV <b>306</b>	TDZE <b>297</b>
-----------------	-----------------



CATEGORY	A	B	C	D
S-ILS 23	689-1 392 (400-1)			
S-LOC 23	1080-¾ 783 (800-¾)	1080-1 783 (800-1)	1080-2	783 (800-2)
<b>C</b> CIRCLING	1080-1 774 (800-1)	1080-1¼ 774 (800-1¼)	1100-2½ 794 (800-2½)	1140-2¾ 834 (900-2¾)
<b>ZIBAT FIX MINIMUMS (DUAL VOR RECEIVERS REQUIRED)</b>				
S-LOC 23	1020-¾ 723 (800-¾)	1020-2		723 (800-2)
<b>C</b> CIRCLING	1020-1	714 (800-1)	1100-2¼ 794 (800-2¼)	1140-2¾ 834 (900-2¾)

NE-3, 20 MAR 2025 to 17 APR 2025

NE-3, 20 MAR 2025 to 17 APR 2025