

(LINSE2.LINSE) 25051

AL-5089 (FAA)

FREDERICK MUNI (F'DK)

LINSE TWO DEPARTURE (RNAV)

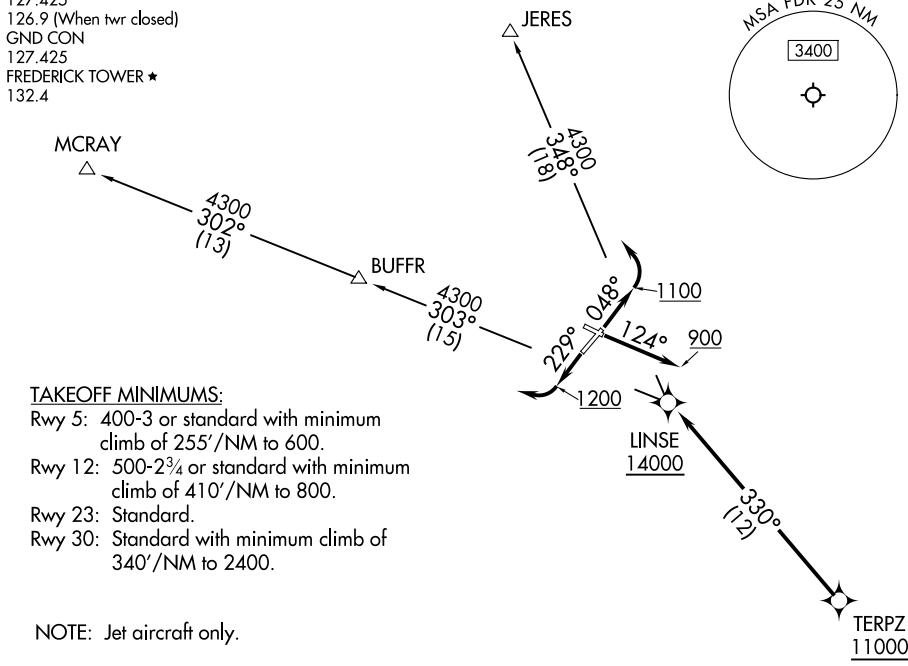
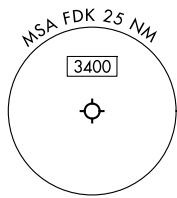
FREDERICK, MARYLAND

POTOMAC DEP CON
 126.1 338.25
 ATIS
 124.875
 CLNC DEL
 127.425
 126.9 (When twr closed)
 GND CON
 127.425
 FREDERICK TOWER ★
 132.4

RNAV 1 - DME/DME/IRU or GPS.

RADAR required.

**TOP ALTITUDE:
16000**



TAKEOFF MINIMUMS:

- Rwy 5: 400-3 or standard with minimum climb of 255'/NM to 600.
- Rwy 12: 500-2¾ or standard with minimum climb of 410'/NM to 800.
- Rwy 23: Standard.
- Rwy 30: Standard with minimum climb of 340'/NM to 2400.

NOTE: Chart not to scale.



DEPARTURE ROUTE DESCRIPTION

- TAKEOFF RUNWAY 5: Climb on heading 048° to 1100 before turning left.
- TAKEOFF RUNWAY 12: Climb on heading 124° to 900 before proceeding westbound.
- TAKEOFF RUNWAY 23: Climb on heading 229° to 1200 before turning right.

Climb on assigned heading for RADAR vectors to cross TERPZ at or above 11000, thence....

....then on track 330° to cross LINSE at or above 14000. Then on assigned transition. Maintain 16000, expect filed altitude 10 minutes after departure.

- JERES TRANSITION (LINSE2.JERES)
- MCRAY TRANSITION (LINSE2.MCRAY)

LINSE TWO DEPARTURE (RNAV)

(LINSE2.LINSE) 20FEB25

FREDERICK, MARYLAND
FREDERICK MUNI (F'DK)

NE-3, 20 MAR 2025 to 17 APR 2025

NE-3, 20 MAR 2025 to 17 APR 2025