

(ORSKY3.ORSKY) 23334  
**ORSKY THREE DEPARTURE**

AL-5094 (FAA)

FLYING CLOUD (FCM)  
 MINNEAPOLIS, MINNESOTA

MINNEAPOLIS DEP CON  
 134.7 284.7  
 ATIS  
 124.9  
 MINNEAPOLIS CLNC DEL  
 121.7 (when tower closed)  
 FLYING CLOUD TOWER ★  
 119.15

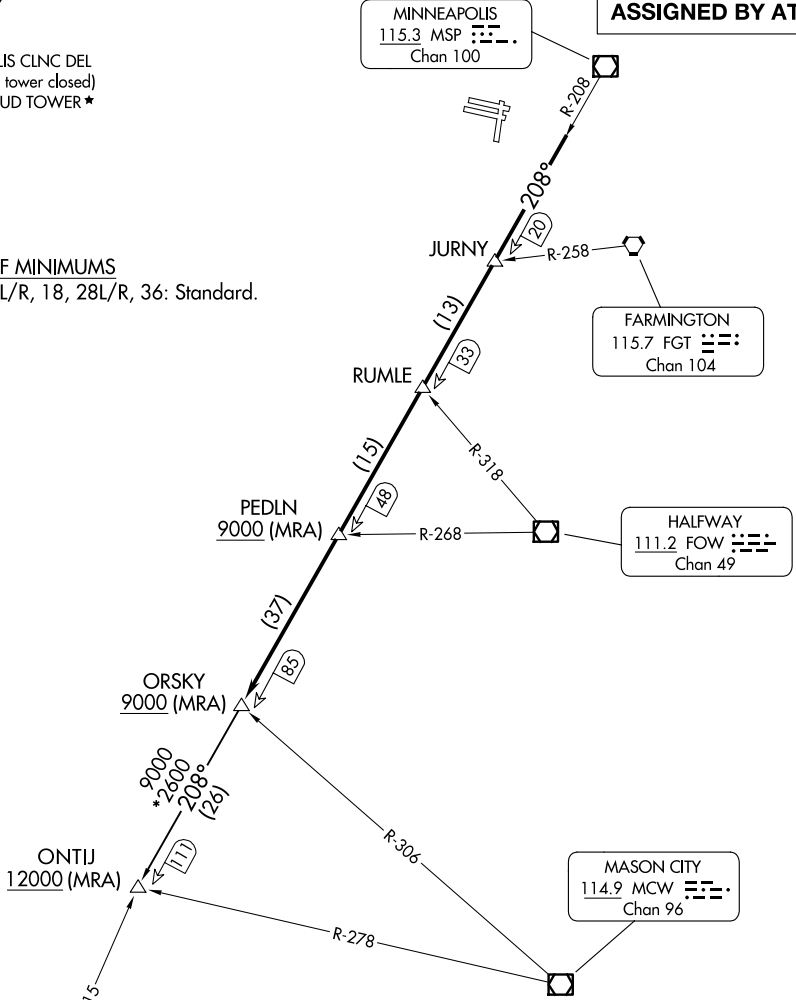
RADAR required.

**TOP ALTITUDE:  
 ASSIGNED BY ATC**

MINNEAPOLIS  
 115.3 MSP  
 Chan 100

TAKEOFF MINIMUMS  
 Rwys 10L/R, 18, 28L/R, 36: Standard.

NC-1, 20 MAR 2025 to 17 APR 2025



NC-1, 20 MAR 2025 to 17 APR 2025

**DEPARTURE ROUTE DESCRIPTION**

TAKEOFF ALL RUNWAYS: Climb on assigned heading for RADAR vectors to assigned fix on MSP R-208, then on depicted route to ORSKY, then on transition. Maintain ATC assigned altitude. Expect filed altitude 10 minutes after departure.

ONTIJ TRANSITION (ORSKY3.ONTIJ): From over ORSKY INT on MSP R-208 to ONTIJ INT.

**ORSKY THREE DEPARTURE**  
 (ORSKY3.ORSKY) 08SEP22

MINNEAPOLIS, MINNESOTA  
 FLYING CLOUD (FCM)