

NC-1, 20 MAR 2025 to 17 APR 2025

MINNEAPOLIS DEP CON
134.7 284.7
ATIS
124.9
MINNEAPOLIS CLNC DEL
121.7 (when lower closed)

RADAR required.

TAKEOFF MINIMUMS
Rwys 10L/R, 18, 28L/R, 36: Standard.

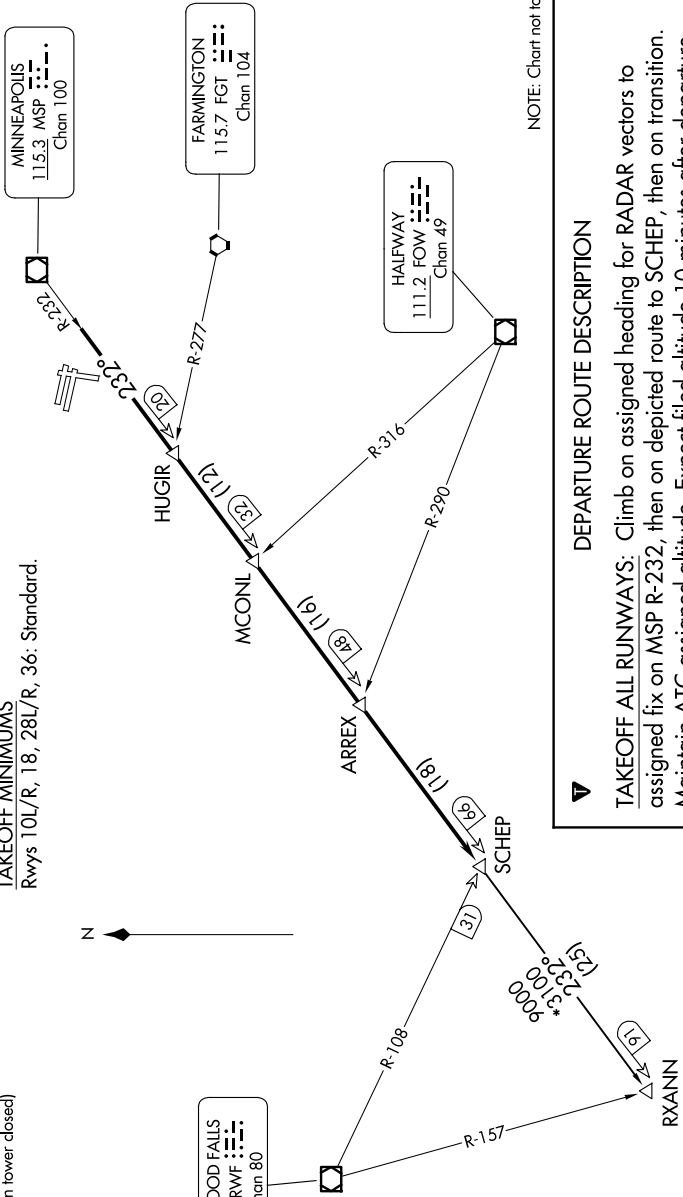
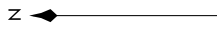
TOP ALTITUDE:
ASSIGNED BY ATC

MINNEAPOLIS
115.3 MSP
Chan 100

REDWOOD FALLS
113.3 RWF
Chan 80

FARMINGTON
115.7 FGT
Chan 104

HALFWAY
111.2 FOW
Chan 49



NOTE: Chart not to scale.

DEPARTURE ROUTE DESCRIPTION

TAKEOFF ALL RUNWAYS: Climb on assigned heading for RADAR vectors to assigned fix on MSP R-232, then on depicted route to SCHEP, then on transition. Maintain ATC assigned altitude. Expect filed altitude 10 minutes after departure.

RXANN TRANSITION (SCHEP1.RXANN): From over SCHEP INT on MSP R-232 to RXANN INT.

NC-1, 20 MAR 2025 to 17 APR 2025