

WLSTN SEVEN DEPARTURE

AL-5094 (FAA)

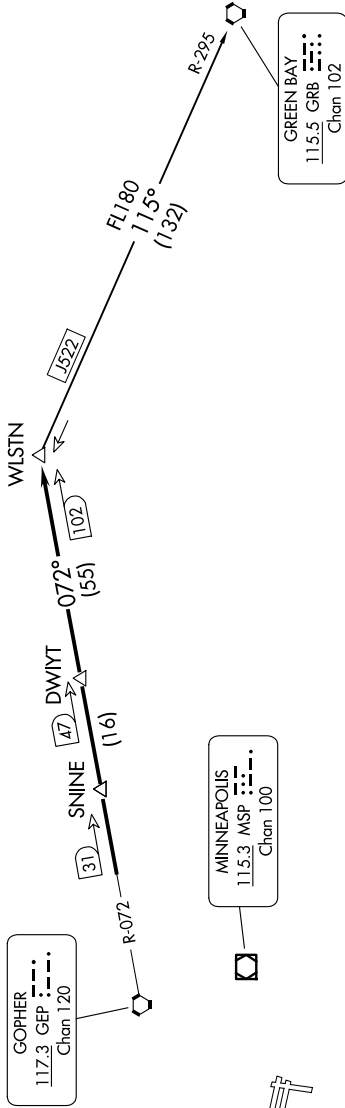
FLYING CLOUD (FCM)
MINNEAPOLIS, MINNESOTA

NC-1, 20 MAR 2025 to 17 APR 2025

MINNEAPOLIS DEP CON
134.7 335.65
ATIS
124.9
MINNEAPOLIS CLNC DEL
121.7 (when lower closed)
FLYING CLOUD TOWER ★
119.15

TAKEOFF MINIMUMS
Rwys 10L/R, 18, 28L/R, 36: Standard.

TOP ALTITUDE:
(JETS) 7000/
(PROPS) 5000



DEPARTURE ROUTE DESCRIPTION

TAKEOFF ALL RUNWAYS: Fly assigned heading and altitude for RADAR vectors to GEP R-072 to WLSTN/GEP 102 DME. Thence . . .

. . . on assigned transition or assigned route. Expect clearance to filed altitude/flight level 10 (ten) minutes after departure.

GREEN BAY TRANSITION (WLSTN7.GRB): From over WLSTN on GRB R-295 to GRB VORTAC.

NOTE: RADAR required.
NOTE: Chart not to scale.