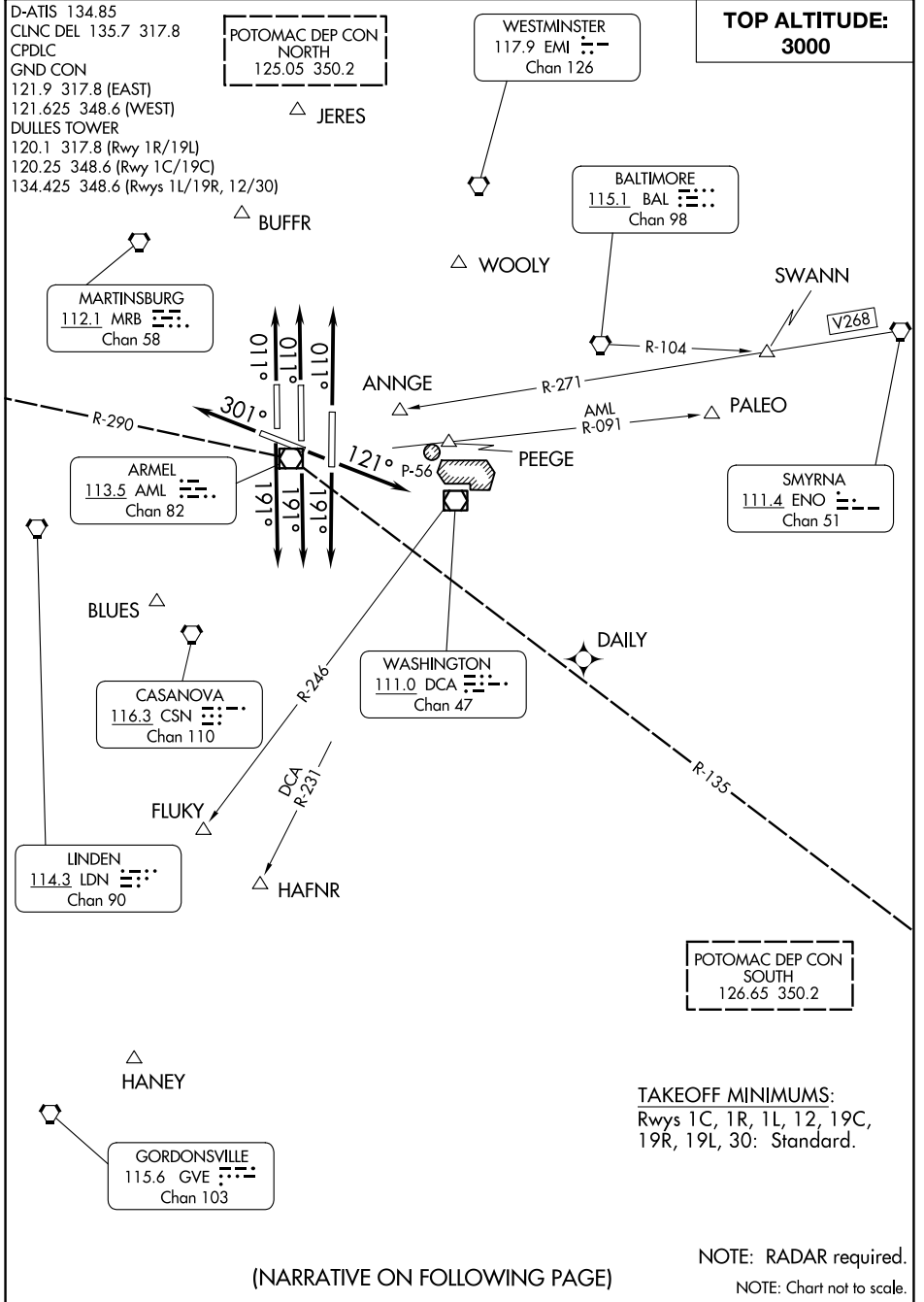


CAPITAL ONE DEPARTURE



NE-3, 20 MAR 2025 to 17 APR 2025

NE-3, 20 MAR 2025 to 17 APR 2025

(NARRATIVE ON FOLLOWING PAGE)

NOTE: RADAR required.

NOTE: Chart not to scale.

CAPITAL ONE DEPARTURE



DEPARTURE ROUTE DESCRIPTION

TAKE OFF RUNWAYS 1C, 1L, 1R: Climb heading 011° or as assigned by ATC,
Thence. . . .

TAKE OFF RUNWAY 12: Climb heading 121° or as assigned by ATC, Thence. . . .

TAKE OFF RUNWAYS 19C, 19L, 19R: Climb heading 191° or as assigned by ATC,
Thence. . . .

TAKE OFF RUNWAY 30: Climb heading 301° or as assigned by ATC, Thence. . . .

. . . .Expect radar vectors to filed/assigned route or depicted fix. Maintain 3000,
expect clearance to filed altitude/flight level 10 minutes after departure.

SPECIAL INSTRUCTIONS: For appropriate departure control frequency, see graphic.
Use frequency depicted within sector where your first Navaid/Fix/Route is located,
or as assigned.

NE-3, 20 MAR 2025 to 17 APR 2025

NE-3, 20 MAR 2025 to 17 APR 2025