

CLTCH THREE DEPARTURE (RNAV)

NE-3, 20 MAR 2025 to 17 APR 2025

POTOMAC DEP CON
126.65 350.2
D-ATIS
134.85
CLNC DEL
135.7 317.8
CPDLC
GND CON
121.9 317.8 (EAST)
121.625 348.6 (WEST)
DULLES TOWER
120.1 317.8 (Rwy 1R/19L)
120.25 348.6 (Rwy 1C/19C)
134.425 348.6 (Rwys 1L/19R, 12/30)

TAKEOFF MINIMUMS:
Rwys 1L/C/R, 19L/C/R, 30:
Standard with minimum climb
of 500' per NM to 820.



TOP ALTITUDE:
3000

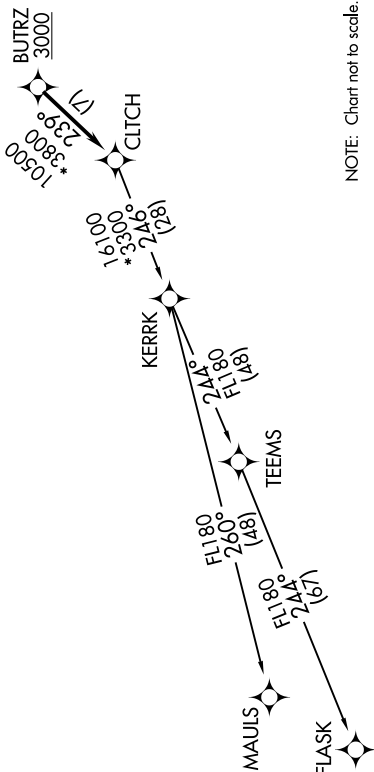
NOTE: RNAV 1.
NOTE: RADAR required.
NOTE: DME/DME/IRU or GPS required.
NOTE: Turbo-jets only.

DEPARTURE ROUTE DESCRIPTION

TAKEOFF RWY 1L/C/R, 19L/C/R, 30: Climb on heading assigned by ATC, expect RADAR vectors to BUTRZ, then on track 239° to CLTCH, thence. . . .

. . . on assigned transition. Maintain 3000. Expect clearance to filed altitude within ten (10) minutes after departure.

FLASK TRANSITION (CLTCH3.FLASK)
MAULS TRANSITION (CLTCH3.MAULS)



NOTE: Chart not to scale.

NE-3, 20 MAR 2025 to 17 APR 2025