


LOC I-OSZ <b>111.3</b>	APP CRS <b>011°</b>	Rwy ldg TDZE Apt Elev
		<b>11500</b> <b>286</b> <b>312</b>

# ILS RWY 1C (SA CAT II)

WASHINGTON DULLES INTL (IAD)

RNP APCH-GPS. From GNATZ or HUFFF.  
DME or RADAR required. DME required for LOC only.  
RADAR required for procedure entry at MUDDO.

MALSRL  
 MISSED APPROACH: Climb to 4000 on AML VOR/DME R-010 to CHDMN/AML 16.9 DME/RADAR and hold, continue climb-in-hold to 4000.

Simultaneous approach authorized.  
DME from AML VOR/DME.  
DME use requires simultaneous reception of I-OSZ and AML DME.

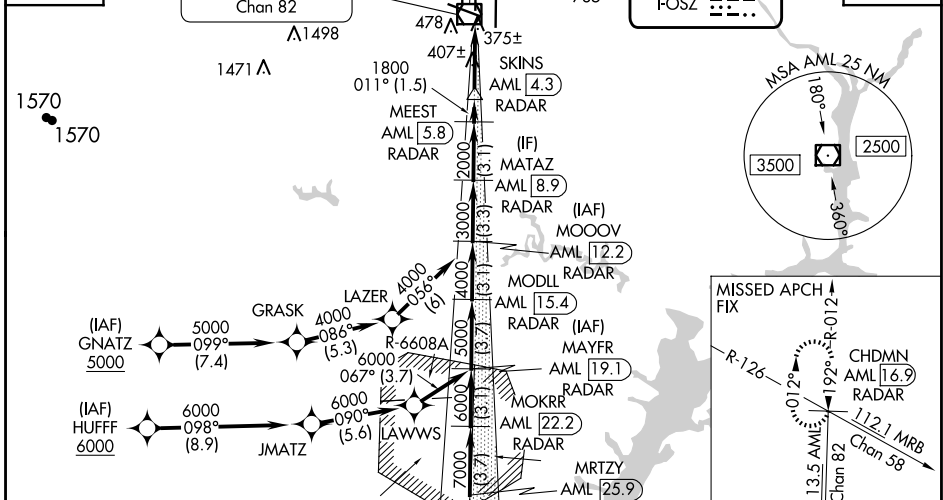
POTOMAC APP CON <b>120.45 306.925</b> (241°-330°) <b>128.525 306.925</b> (091°-240°) <b>126.1 338.25</b> (331°-090°)	DULLES TOWER <b>120.1 317.8</b> (Rwys 1R/19L) <b>120.25 348.6</b> (Rwys 1C/19C) <b>134.425 348.6</b> (Rwys 1L/19R and 12/30)	GND CON <b>121.9 317.8</b> (EAST) <b>121.625 348.6</b> (WEST)	CLNC DEL <b>135.7 317.8</b>
---	---	---	--------------------------------

D-ATIS  
**134.85**

ARMEL  
**113.5** AML  
Chan 82

LOCALIZER **111.3**  
I-OSZ

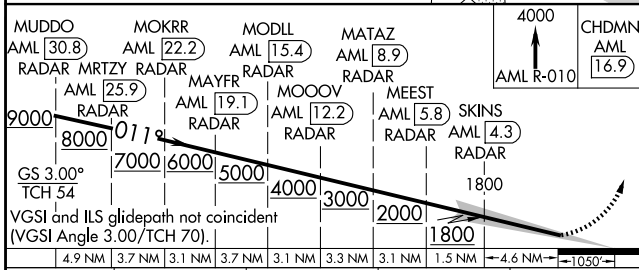
CPDLC



NE-3, 20 MAR 2025 to 17 APR 2025

NE-3, 20 MAR 2025 to 17 APR 2025

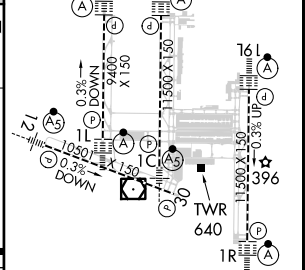
MUDDO AML 30.8 RADAR	MOKRR AML 22.2 RADAR	MODLL AML 15.4 RADAR	MATAZ AML 8.9 RADAR	CHDMN AML 16.9
MRTZY AML 25.9 RADAR	MAYFR AML 19.1 RADAR	MOOOV AML 12.2 RADAR	MEEST AML 5.8 RADAR	SKINS AML 4.3 RADAR



CATEGORY	A	B	C	D
S-ILS 1C	RA 104/12	100 DA 386		

## SA CATEGORY II ILS - SPECIAL AIRCREW & AIRCRAFT CERTIFICATION REQUIRED

ELEV 312	D	TDZE 286
----------	---	----------



TDZ/CL Rwys 1C, 1L, 1R, 12, 19C and 19R  
REIL Rwy 30  
HIRL all Rwys