

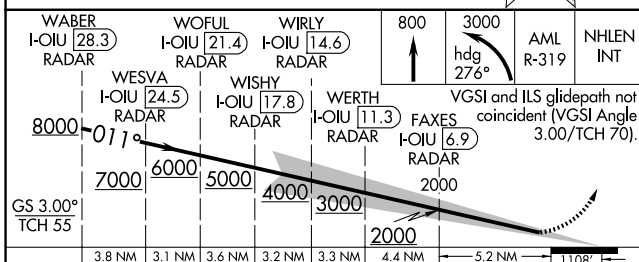
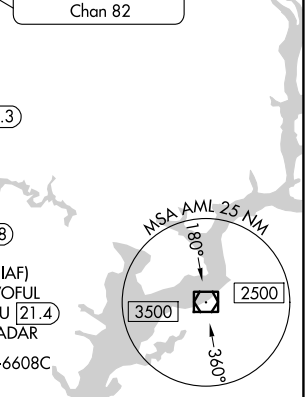
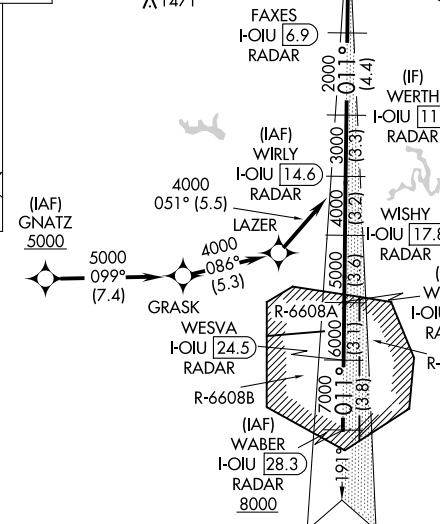
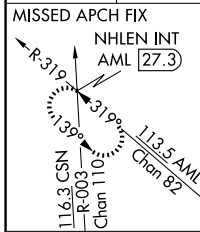
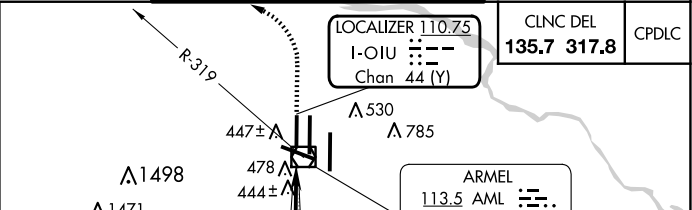
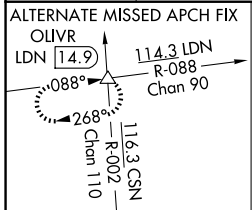
LOC/DME I-OIU <b>110.75</b>	APP CRS <b>011°</b>	Rwy Idg <b>9400</b>
Chan <b>44 (Y)</b>	TDZE <b>296</b>	Apt Elev <b>312</b>

# ILS RWY 1L (CAT II & III) WASHINGTON DULLES INTL (IAD)

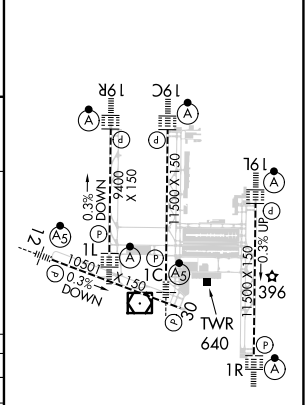
RNP APCH - GPS. From GNATZ.  
DME or RADAR required.  
RADAR required for procedure entry at WABER.  
Simultaneous approach authorized.

ALSIF-2  
MISSED APPROACH: Climb to 800 then climbing left turn to 3000 on heading 276° and on AML VOR/DME R-319 to NHLEN INT/AML 27.3 DME and hold.

D-ATIS <b>134.85</b>	POTOMAC APP CON <b>120.45 306.925</b> (241°-330°) <b>128.525 306.925</b> (091°-240°) <b>126.1 338.25</b> (331°-090°)	DULLES TOWER <b>120.1 317.8</b> (Rwy 1R/19L) <b>120.25 348.6</b> (Rwy 1C/19C) <b>134.425 348.6</b> (Rwys 1L/19R and 12/30)	GND CON <b>121.9 317.8</b> (EAST) <b>121.625 348.6</b> (WEST)
-------------------------	---	---	---



ELEV 312	TDZE 296
----------	----------



CATEGORY	A	B	C	D
S-ILS 1L	CAT II RA 97/12 100 DA 396			
S-ILS 1L	CAT III RVR 06			

## CATEGORY II & III ILS - SPECIAL AIRCREW & AIRCRAFT CERTIFICATION REQUIRED

NE-3, 20 MAR 2025 to 17 APR 2025

NE-3, 20 MAR 2025 to 17 APR 2025