

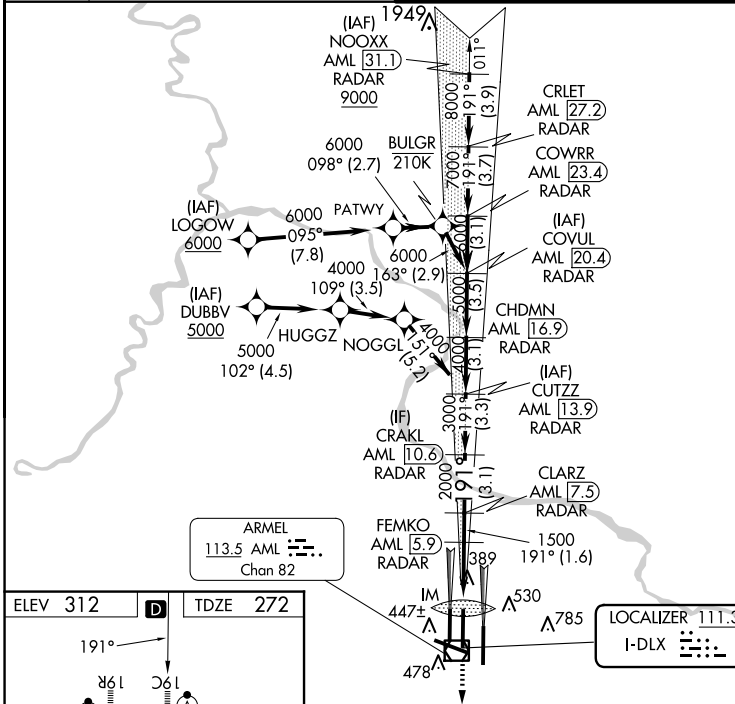
LOC I-DLX 111.3	APP CRS 191°	Rwy Idg 11089 TDZE 272 Apt Elev 312
---------------------------	------------------------	--

ILS or LOC RWY 19C

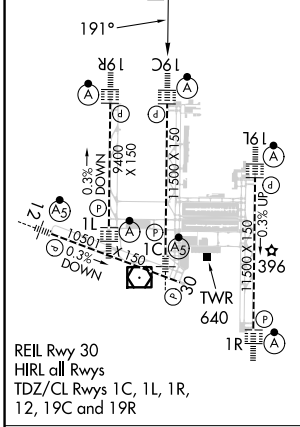
WASHINGTON DULLES INTL (IAD)

RNP APCH - GPS. RADAR required for procedure entry at NOOXX. DME or RADAR required.		ALSIF-2 	MISSED APPROACH: Climb to 3000 direct MOOOV and hold.
 Simultaneous approach authorized. DME from AML VOR/DME. DME use requires simultaneous reception of I-DLX and AML DME. For inop ALS, increase S-LOC 19C Cat C and D visibility to RVR 5500.			
D-ATIS 134.85	POTOMAC APP CON 120.45 306.925 (241°-330°) 128.525 306.925 (091°-240°) 126.1 338.25 (331°-090°)	DULLES TOWER 120.1 317.8 (Rwy 1R/19L) 120.25 348.6 (Rwy 1C/19C) 134.425 348.6 (Rwys 1L/19R and 12/30)	GND CON 121.9 317.8 (EAST) 121.625 348.6 (WEST)

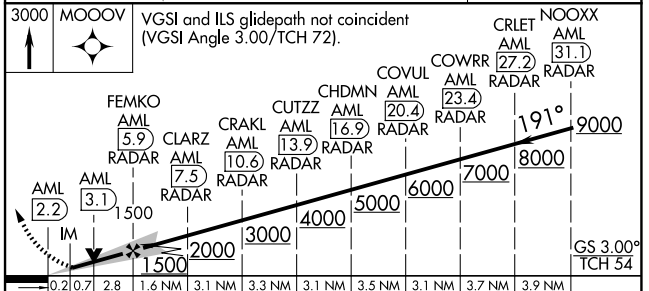
CLNC DEL 135.7 317.8	CPDLC
--------------------------------	-------



ELEV 312	TDZE 272
----------	----------



FAF to MAP 3.7 NM					
Knots	60	90	120	150	180
Min:Sec	3:42	2:28	1:51	1:29	1:14



CATEGORY	A	B	C	D
S-ILS 19C	472/18 200 (200-½)			
S-LOC 19C	640/24	368 (400-½)	640/35	368 (400-¾)
CIRCLING	940-1	628 (700-1)	940-1¾	1180-2¾
			628 (700-1¾)	868 (900-2¾)

NE-3, 20 MAR 2025 to 17 APR 2025

NE-3, 20 MAR 2025 to 17 APR 2025