

LOC/DME I-SGC <b>110.1</b> Chan <b>38</b>	APP CRS <b>191°</b>	Rwy ldg <b>11500</b> TDZE <b>302</b> Apt Elev <b>312</b>
---	------------------------	--

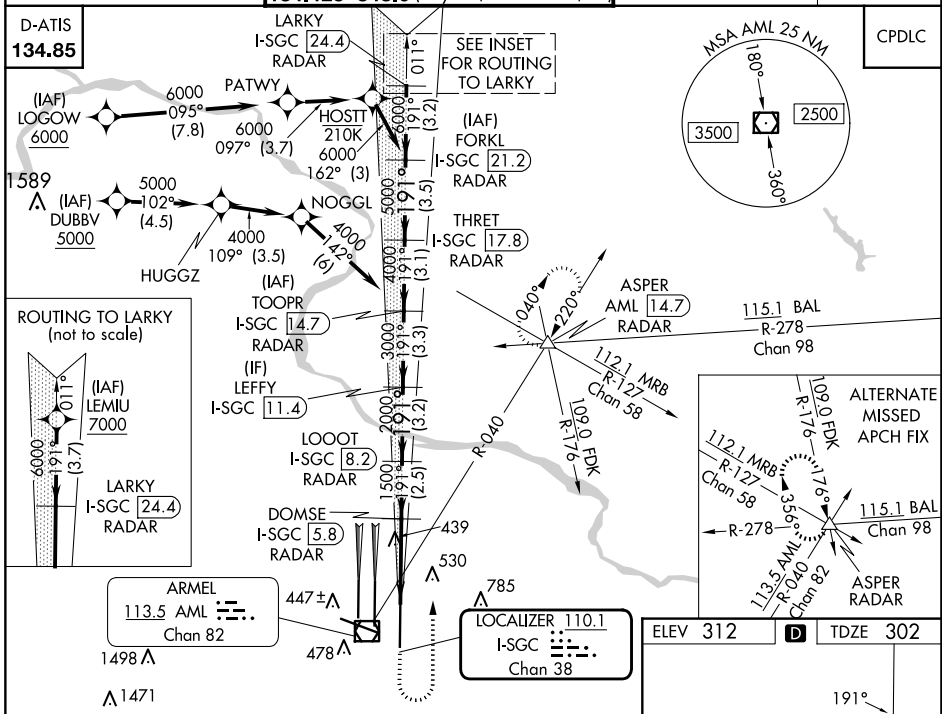
# ILS or LOC RWY 19L

## WASHINGTON DULLES INTL (IAD)

RNP APCH - GPS. From LOGOV, or DUBBV, or LEMIU.  
 DME or RADAR required. RADAR required for procedure entry at LEMIU.  
 Simultaneous approach authorized.  
 \*RVR 1800 authorized with use of FD or AP or HUD to DA.

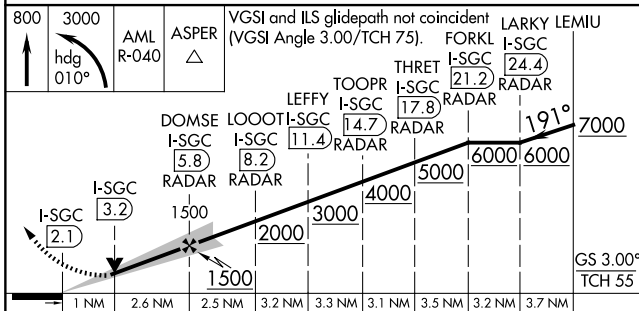
ALSF-2  
 MISSED APPROACH: Climb to 800 then climbing left turn to 3000 on heading 010° and on AML VOR/DME R-040 to ASPER INT/AML 14.7 DME and hold.

POTOMAC APP CON <b>120.45 306.925</b> (241°-330°) <b>128.525 306.925</b> (091°-240°) <b>126.1 338.25</b> (331°-090°)	DULLES TOWER <b>120.1 317.8</b> (Rwy 1R/19L) <b>120.25 348.6</b> (Rwy 1C/19C) <b>134.425 348.6</b> (Rwys 1L/19R and 12/30)	GND CON <b>121.9 317.8</b> (EAST) <b>121.625 348.6</b> (WEST)	CLNC DEL <b>135.7 317.8</b>
---	---	---	--------------------------------

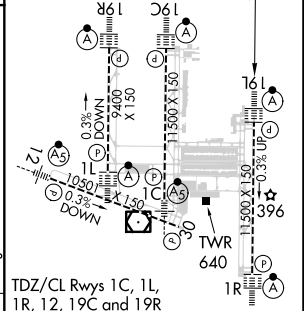


NE-3, 20 MAR 2025 to 17 APR 2025

NE-3, 20 MAR 2025 to 17 APR 2025



ELEV 312	TDZE 302
----------	----------



CATEGORY	A	B	C	D
S-ILS 19L *	502/24 200 (200-½)			
S-LOC 19L	700/24 398 (400-½)	700/35 398 (400-¾)		

FAF to MAP 3.6 NM					
Knots	60	90	120	150	180
Min:Sec	3:36	2:24	1:48	1:26	1:12