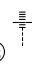
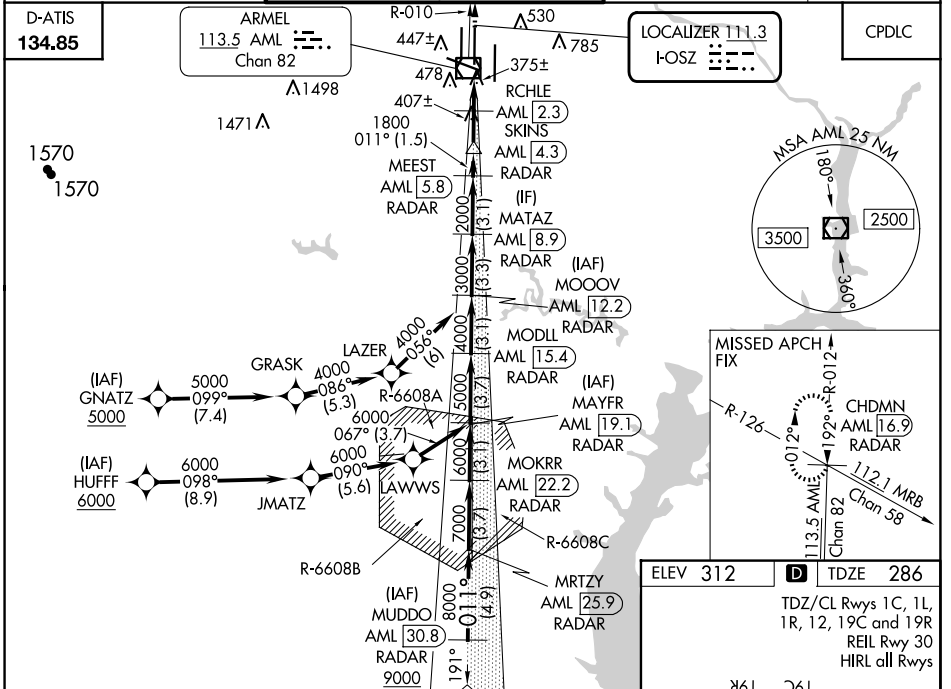


LOC I-OSZ 111.3	APP CRS 011°	Rwy ldg 11500
		TDZE 286
		Apt Elev 312

ILS or LOC RWY 1C

WASHINGTON DULLES INTL (IAD)

RNP APCH-GPS. From GNATZ or HUFFF.		MALS R 	MISSED APPROACH: Climb to 4000 on AML VOR/DME R-010 to CHDMN/AML 16.9 DME/RADAR and hold, continue climb-in-hold to 4000.	
DME or RADAR required. DME required for LOC only. RADAR required for procedure entry at MUDDO.				
<p>▼ Simultaneous approach authorized. For inop ALS, increase S-LOC Cats C/D visibility to RVR 5500. DME from AML VOR/DME. DME use requires simultaneous reception of I-OSZ and AML DME.</p> <p>▲</p>				
POTOMAC APP CON 120.45 306.925 (241°-330°) 128.525 306.925 (091°-240°) 126.1 338.25 (331°-090°)		DULLES TOWER 120.1 317.8 (Rwy 1R/19L) 120.25 348.6 (Rwy 1C/19C) 134.425 348.6 (Rwys 1L/19R and 12/30)	GND CON 121.9 317.8 (EAST) 121.625 348.6 (WEST)	CLNC DEL 135.7 317.8



NE-3, 20 MAR 2025 to 17 APR 2025

NE-3, 20 MAR 2025 to 17 APR 2025

MUDDO AML [30.8] RADAR	MOKRR AML [22.2] RADAR	MODLL AML [15.4] RADAR	MATAZ AML [8.9] RADAR	4000 AML R-010	CHDMN AML [16.9] RADAR
RADAR MRITZY AML [25.9] RADAR	MAYFR AML [19.1] RADAR	MOOOV AML [12.2] RADAR	MEEST AML [5.8] RADAR	SKINS AML [4.3] RADAR	AML VOR/DME
9000 8000 7000 6000 5000 4000 3000 2000 1800 1140	011°				
VGSI and ILS glidepath not coincident (VGSI Angle 3.00/TCH 70).					
4.9 NM 3.7 NM 3.1 NM 3.1 NM 3.1 NM 1.5 NM 2 NM 2.6 NM					
CATEGORY	A		B		D
S-ILS 1C	486/18		200 (200-½)		
S-LOC 1C	640/24 354 (400-½)		640/30 354 (400-¾)		
CIRCLING	940-1 628 (700-1)		940-1¼ 628 (700-1¾)		1180-2¾ 868 (900-2¾)

