

LOC/DME I-HAD 110.1 Chan 38	APP CRS 011°	Rwy ldg 11500 TDZE 312 Apt Elev 312
--	------------------------	--

ILS or LOC RWY 1R

WASHINGTON DULLES INTL (IAD)

RNP APCH-GPS. From GNATZ, or HUFFF.

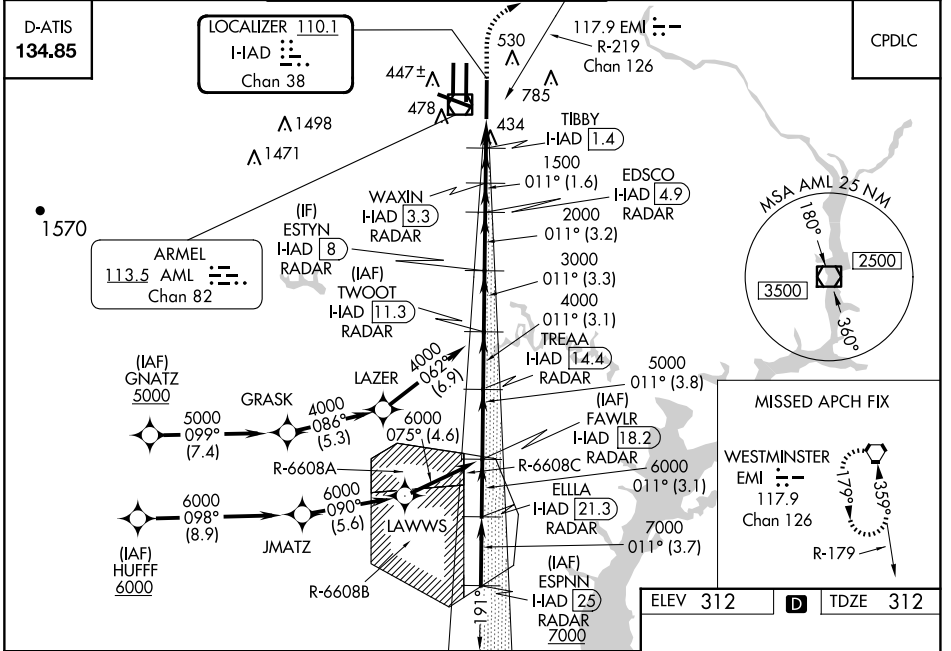
DME or RADAR required. DME required for LOC only. RADAR required for procedure entry at ESPNN.

ALSF-2

MISSED APPROACH: Climb to 800 then climbing right turn to 3000 on heading 060° and EMI VORTAC R-219 to EMI VORTAC and hold.

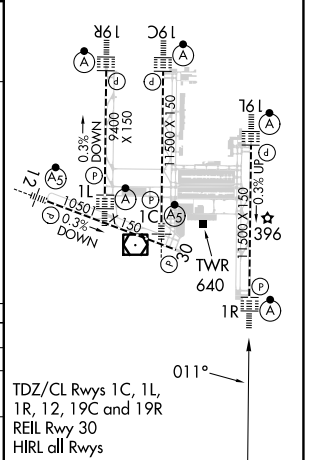
Simultaneous approach authorized.

POTOMAC APP CON 120.45 306.925 (241°-330°) 128.525 306.925 (091°-240°) 126.1 338.25 (331°-090°)	DULLES TOWER 120.1 317.8 (Rwy 1R/19L) 120.25 348.6 (Rwy 1C/19C) 134.425 348.6 (Rwys 1L/19R and 12/30)	GND CON 121.9 317.8 (EAST) 121.625 348.6 (WEST)	CLNC DEL 135.7 317.8
---	---	---	--------------------------------



VGSI and ILS glidepath not coincident (VGSI Angle 3.00/TCH 72).

ESPNN I-HAD 25 RADAR	ELLA I-HAD 21.3 RADAR	FAWLR I-HAD 18.2 RADAR	TREA I-HAD 14.4 RADAR	TWOOT I-HAD 11.3 RADAR	ESTYN I-HAD 8 RADAR	EDSCO I-HAD 4.9 RADAR	WAXIN I-HAD 3.3 RADAR	TIBBY I-HAD 1.4 RADAR	DME I-HAD 0.8 ANT.
7000	7000	6000	5000	4000	3000	2000	1500	900	800
3.7 NM	3.1 NM	3.8 NM	3.1 NM	3.3 NM	3.2 NM	1.6 NM	1.9 NM	0.7	0.8
800	3000	EMI	R-219	hdg 060°					
GS 3.00° TCH 55									
CATEGORY	A	B	C	D					
S-ILS 1R	512/18		200 (200-½)						
S-LOC 1R	700/24 388 (400-½)		700/35 388 (400-¾)						
CIRCLING	940-1 628 (700-1)		940-1¾ 628 (700-1¾)		1180-2¾ 868 (900-2¾)				



NE-3, 20 MAR 2025 to 17 APR 2025

NE-3, 20 MAR 2025 to 17 APR 2025