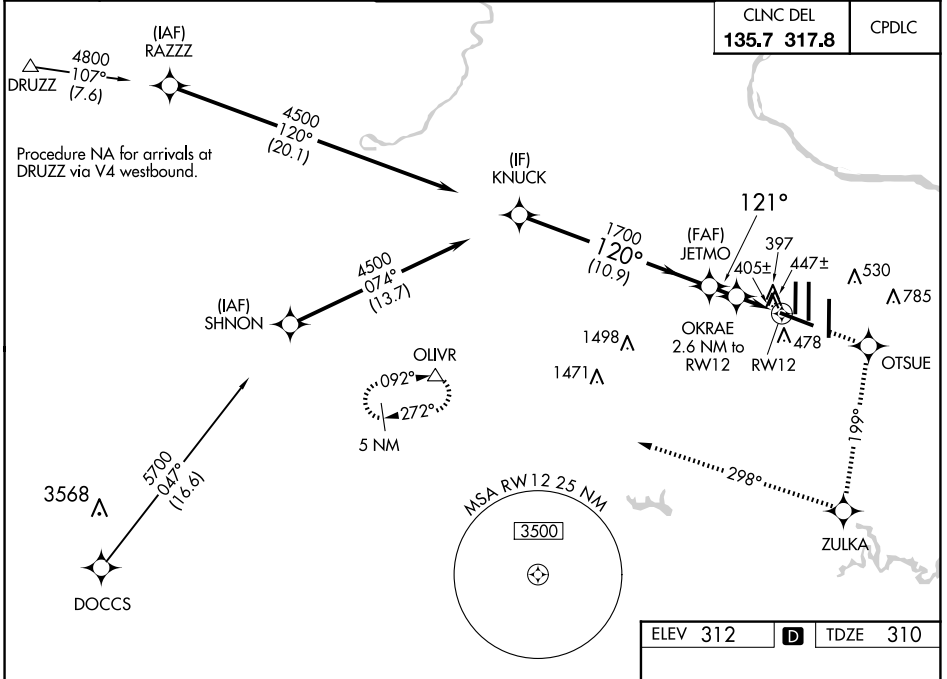


|  |                        |  |
|--|------------------------|--|
| WAAS<br>CH <b>86310</b><br><b>W12A</b> | APP CRS<br><b>121°</b> | Rwy Idg <b>10501</b><br>TDZE <b>310</b><br>Apt Elev <b>312</b> |
|--|------------------------|--|

# RNAV (GPS) RWY 12

## WASHINGTON DULLES INTL (IAD)

|  |   |   |  |
|--|---|---|--|
| RNP APCH - GPS.  |   | MALSR   | MISSED APPROACH: Climb to 5000 direct OTSUE and on track 199° to ZULKA and right turn on track 298° to OLIVR and hold. |
| ▼ For inop ALS, increase LNAV Cats C/D visibility to RVR 6000.<br>▲ For uncompensated Baro-VNAV systems, LNAV/VNAV NA below -15°C or above 48°C. |   |   |  |
| D-ATIS<br><b>134.85</b>  | POTOMAC APP CON<br><b>120.45 306.925</b> (241°-330°)<br><b>128.525 306.925</b> (091°-240°)<br><b>126.1 338.25</b> (331°-090°) | DULLES TOWER<br><b>120.1 317.8</b> (Rwy 1R/19L)<br><b>120.25 348.6</b> (Rwy 1C/19C)<br><b>134.425 348.6</b> (Rwys 1L/19R and 12/30) | GND CON<br><b>121.9 317.8</b> (EAST)<br><b>121.625 348.6</b> (WEST)  |



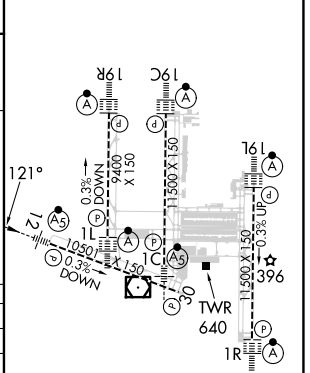
|                                |       |
|--------------------------------|-------|
| CLNC DEL<br><b>135.7 317.8</b> | CPDLC |
|--------------------------------|-------|

NE-3, 20 MAR 2025 to 17 APR 2025

NE-3, 20 MAR 2025 to 17 APR 2025

|  |        |             |                        |                         |        |
|--|--------|-------------|------------------------|-------------------------|--------|
| VGSIs and RNAV glidepath not coincident (VGSIs Angle 3.00/TCH 66). |        | 5000        | OTSUE                  | ZULKA                   | OLIVR  |
| KNUCK  |        | ↑           | ✧                      | ✧ tr 199°               | △      |
| Procedure Turn NA<br>GP 3.00°<br>TCH 49                            |        | 4500        | 1700                   | 1180                    |        |
|  |        | 120°        | 121°                   |                         |        |
|  |        | 10.9 NM     | 1.6 NM                 | 1.5 NM                  | 1.1 NM |
| CATEGORY   | A      | B           | C                      | D                       |        |
| LPV DA   |        | 510/18      | 200 (200-½)            |                         |        |
| LNAV/VNAV DA   |        | 737/50      | 427 (500-1)            |                         |        |
| LNAV MDA   | 720/24 | 410 (500-½) | 720/40                 | 410 (500-¾)             |        |
| CIRCLING   | 940-1  | 628 (700-1) | 940-1¾<br>628 (700-1¾) | 1180-2¾<br>868 (900-2¾) |        |

|          |   |          |
|----------|---|----------|
| ELEV 312 | D | TDZE 310 |
|----------|---|----------|



TDZ/CL Rwys 1C, 1L,  
1R, 12, 19C and 19R  
REL Rwy 30  
HIRL all Rwys