

APP CRS	Rwy Idg	11500
191°	TDZE	302
	Apt Elev	312

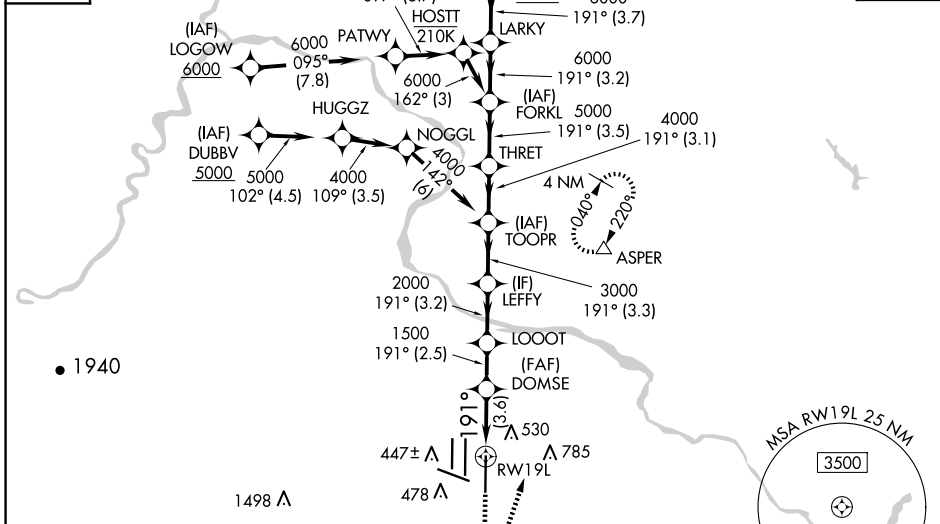
RNAV (RNP) Z RWY 19L

WASHINGTON DULLES INTL (IAD)

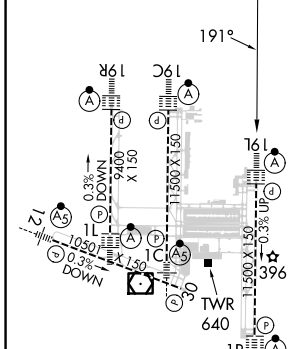
RNP AR APCH - GPS.	ALSF-2	MISSED APPROACH: Climb to 800 then climbing left turn to 3000 direct ASPER and hold.
▼ For uncompensated Baro-VNAV systems, procedure NA below -13°C or above 54°C. Simultaneous approach authorized. For inop ALS, increase RNP 0.11 all Cats visibility to RVR 4500.		

POTOMAC APP CON 120.45 306.925 (241°-330°) 128.525 306.925 (091°-240°) 126.1 338.25 (331°-090°)	DULLES TOWER 120.1 317.8 (Rwys 1R/19L) 120.25 348.6 (Rwys 1C/19C) 134.425 348.6 (Rwys 1L/19R and 12/30)	GND CON 121.9 317.8 (EAST) 121.625 348.6 (WEST)	CLNC DEL 135.7 317.8
---	---	---	--------------------------------

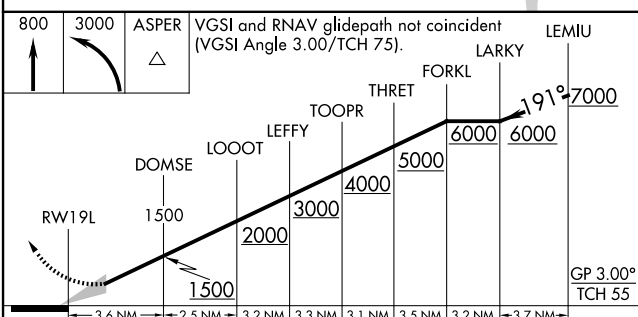
D-ATIS 134.85	CPDLC
-------------------------	-------



ELEV 312	D	TDZE 302
----------	---	----------



TDZ/CL Rwys 1C, 1L, 1R, 12, 19C and 19R
REIL Rwy 30
HIRL All Rwys



CATEGORY	A	B	C	D
RNP 0.11 DA		620/24	318 (400-1/2)	
RNP 0.15 DA		684/35	382 (400-5/8)	
RNP 0.30 DA		730/40	428 (500-3/4)	

AUTHORIZATION REQUIRED

NE-3, 20 MAR 2025 to 17 APR 2025

NE-3, 20 MAR 2025 to 17 APR 2025