

# RNAV (RNP) Z RWY 19R

WASHINGTON DULLES INTL (IAD)

APP CRS	Rwy Idg	<b>9400</b>
<b>191°</b>	TDZE	<b>278</b>
	Apt Elev	<b>312</b>

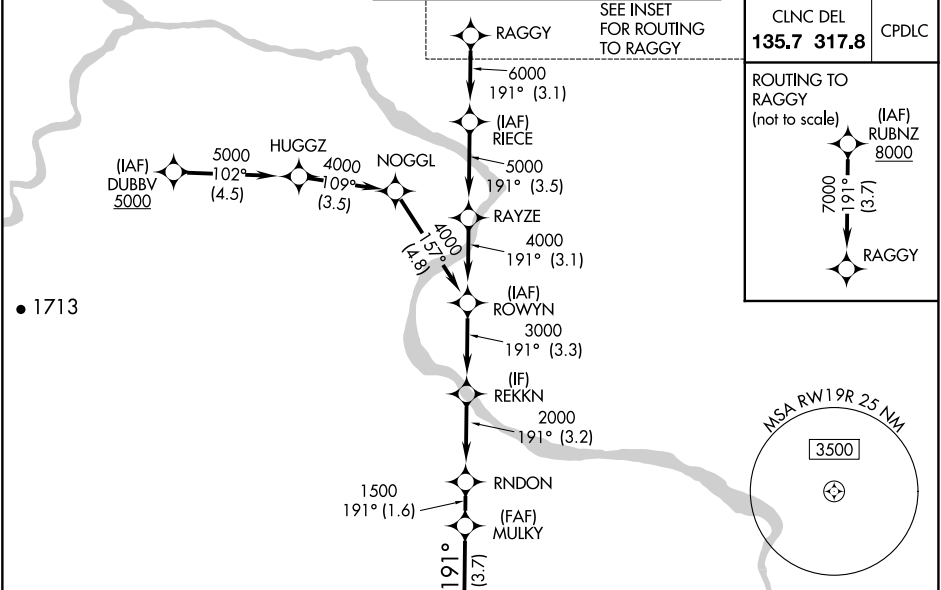
RNP AR APCH - GPS.

▼ For uncompensated Baro-VNAV systems, procedure NA below -13°C or above 54°C. Simultaneous approach authorized. For inop ALS, increase RNP 0.30 visibility all Cats to RVR 5500.

ALS-F-2

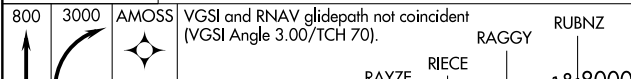
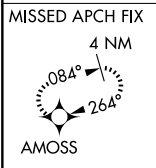
MISSED APPROACH: Climb to 800 then climbing right turn to 3000 direct AMOSS and hold.

D-ATIS	POTOMAC APP CON	DULLES TOWER	GND CON
<b>134.85</b>	<b>120.45 306.925</b> (241°-330°)	<b>120.1 317.8</b> (Rwy 1R/19L)	<b>121.9 317.8</b> (EAST)
	<b>128.525 306.925</b> (091°-240°)	<b>120.25 348.6</b> (Rwy 1C/19C)	<b>121.625 348.6</b> (WEST)
	<b>126.1 338.25</b> (331°-090°)	<b>134.425 348.6</b> (Rwy 1L/19R and 12/30)	



NE-3, 20 MAR 2025 to 17 APR 2025

NE-3, 20 MAR 2025 to 17 APR 2025



800	3000	AMOSS	VGSI and RNAV glidepath not coincident (VGSI Angle 3.00/TCH 70).					RAGGY	RUBNZ		
↑		↘	✧	MULKY	RNDON	REKKN	ROWYN	RAYZE	RIECE	8000	
				1500	2000	3000	4000	5000	6000	7000	
				1.500	2.000	3.000	3.100	3.500	3.100	3.700	
				3.7 NM	1.6 NM	3.2 NM	3.3 NM	3.1 NM	3.5 NM	3.1 NM	3.7 NM
CATEGORY	A		B			C		D			
RNP 0.10 DA	608/26		330 (300-½)								
RNP 0.30 DA	658/35		380 (400-¾)								

